



Toll Free US & Canada: **800-645-8180**

Eastern Division

60 Fleetwood Ct., Ronkonkoma, NY 11779-6907
Telephone: (631) 471-3300 Fax: (631) 471-3308

Western Division

1219 W. Mahalo Place, Rancho Dominguez, CA 90220-5446
Telephone : (310) 632-5400 Fax: (310) 632-3900

Supplying the Aerospace, Defense & Metal Working Industries Since 1951!

Minimum Order

\$100.00 List Price

Terms

Net 30 days on approved credit only.
Approved credit cards.
Prepaid via check or wire transfer.

No C.O.D. shipments.

Returns

Return authorization is required.
Merchandise must be sent freight prepaid to the facility from which it was purchased.
A 20% restocking charge is applicable.

All claims must be made within 7 days of receipt of goods.

Freight

F.O.B. shipping point.

Special Orders

All special orders may require prepayment.

Currency

All prices are in US dollars.

Overseas Customer Terms

Same as above, only **prepayment via bank wire transfer (all fees for buyers account) or by bank check.**

US Air Tool Company (also known as USATCO) has been a family owned and operated business since 1951. We are now a US manufacturer and worldwide distributor of high quality tools for the aviation industry with offices in New York & California. In addition, from the beginning of the homebuilder era in the 1970's, USATCO has been providing tools and equipment to craftsmen around the world who build and fly their own aircraft. These "sheet-metal artists" are now flying thousands of planes built and maintained with USATCO tools.

USATCO offers the highest quality products at competitive prices, with the knowledge and experience necessary for expert advice in product selection. Our courteous staff will be pleased to assist you. And of course, all the products we offer are fully guaranteed. If you don't see what you are looking for, please don't hesitate to contact us. We work hard to provide our customers with straightforward & reliable business. Try us & see!

USATCO.com

Don't forget to check out USATCO Online, with monthly sales, homebuilder specials, surplus items & an easy to use interface its a great place to shop for tools on the web. **www.USATCO.com**

Government IMPAC Cards Accepted

USATCO Tool Repair

We repair all major brand pneumatic tools on our premises. We are an official repair station for Cherry Textron[®], Chicago Pneumatic[®], and Cooper[®] Power Tools (including Dotco[®], Gardener Denver[®], Buckeye[®] and Doler[®]). In addition, we have our own manufacturing and modification facilities. We are riveting and product assembly specialists!

We will be happy to examine your tools free of charge and give you an estimate of repair cost. Ship prepaid to any of our facilities. Please send tensiometers to our New York Lab only.

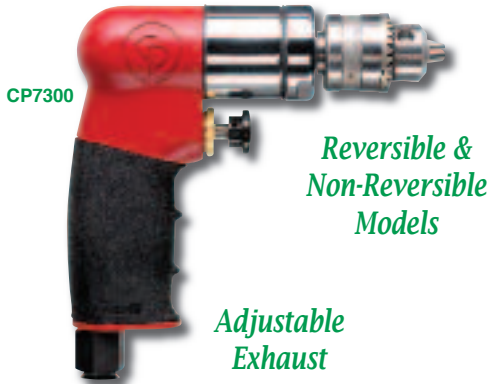
Please ask about our tool rental policy!

Limited Warranty

If for any reason you are not completely satisfied with any item purchased from us you may request a return authorization within seven (7) days of receipt of goods. When obtained, send us the item (transportation prepaid) for replacement, repair or refund. Tools manufactured by USATCO are warrantied for one (1) year from date of purchase. We cannot assume liability for abuse, misuse or alteration of goods. Any tampering with tools or attempted repairs of same will nullify this warranty. Warranties from other manufacturers available upon request.

AIR DRILLS & ACCESSORIES

Chicago Pneumatic® Mini Air Drills



- An incredibly compact & lightweight general purpose tool.
- Planetary gearing with brass bushings for low wear & long life.
- Incl. Jacobs keyed chuck, double bearing spindle for low run out.

1/4" Capacity - 0.25 hp (0.19 kW) - Non-Reversible

Part Number	Free RPM	Overall Length	Weight
CP7300	2800	5" (127 mm)	1.4 lbs (0.6 kgs)

1/4" Capacity - 0.25 hp (0.19 kW) - Reversible

Part Number	Free RPM	Overall Length	Weight
CP7300R	2700	6-1/4" (157 mm)	1.4 lbs (0.6 kgs)

Sioux® Mini Air Drills

Ergonomic Housing



Standard models include a 1/4" keyed chuck - new model 1410-520 includes a 3/8" keyless chuck.

Note: 4300 & 6000 RPM models also available, please inquire.

1/4" Capacity - 0.33 hp (0.25 kW) - Non-Reversible

Part Number	Free RPM	Overall Length	Weight
1410	2600	6-1/4" (159 mm)	1.3 lbs (0.6 kgs)
DR1412	3600	6-1/4" (159 mm)	1.3 lbs (0.6 kgs)

1/4" Capacity - 0.2 hp (0.15 kW) - Reversible

Part Number	Free RPM	Overall Length	Weight
1410R	2000	6-1/4" (159 mm)	1.3 lbs (0.6 kgs)
1412R	2600	6-1/4" (159 mm)	1.3 lbs (0.6 kgs)

3/8" Capacity - 0.33 hp (0.25 kW) - Keyless Non-Reversible

Part Number	Free RPM	Overall Length	Weight
1410-520	2600	6-1/4" (159 mm)	1.3 lbs (0.6 kgs)

Sioux® Mini Lever Grip Air Drills



Includes 1/4" keyed chuck.

1/4" Capacity - 0.33 hp (0.25 kW) - Non-Reversible

Part Number	Free RPM	Overall Length	Weight
1420	2600	8" (203 mm)	1.2 lbs (0.5 kgs)
DR1422	3600	8" (203 mm)	1.2 lbs (0.5 kgs)

Sioux® Heavy-Duty 'Z-Handle' Drills



Works quietly & effectively in limited access areas.

1/4" Capacity - 0.5 hp (0.37 kW) - Non-Reversible

Part Number	Free RPM	Overall Length	Weight
2S1310	2200	7-3/4" (197 mm)	2.6 lbs (1.2 kgs)
2S1410	3200	7-3/4" (197 mm)	2.6 lbs (1.2 kgs)

Sioux® Aviation Air Drills



Precision Signature Series Drills

- Lightweight aluminum housing with ergonomic handle & soft textured grip.
- Three planet gear system for increased life & load capacity.
- With teasing throttle & keyed chuck.

Note: Air Inlet 1/4" NPT. 3/8"-24 spindle thread.

1/4" Capacity - 0.6 hp (0.45 kW) - Non-Reversible

Part Number	Free RPM	Overall Length	Weight
SDR6P26N2	2600	5-3/4" (146 mm)	2.1 lbs (0.95 kgs)

3/8" Capacity - 0.6 hp (0.45 kW) - Non-Reversible

Part Number	Free RPM	Overall Length	Weight
SDR6P26N3	2600	6-1/4" (159 mm)	2.3 lbs (1.0 kgs)

Dotco® Ergonomic Air Drills



14CFS93-38

- Dramatically redesigned ergonomics promote operator comfort.
- Perfect for tight quarters and cramped spaces.
- Includes keyed chuck.
- Other models & options available, please inquire.

1/4" Capacity - 0.4 hp (0.30 kW) - Non-Reversible			
Part Number	Free RPM	Overall Length	Weight
14CFS90-38	29,000	5-3/4" (146 mm)	1.5 lbs (0.7 kgs)
14CFS91-38	5200	5-3/4" (146 mm)	1.5 lbs (0.7 kgs)
14CFS92-38	3800	5-3/4" (146 mm)	1.5 lbs (0.7 kgs)
14CFS93-38	3200	5-3/4" (146 mm)	1.5 lbs (0.7 kgs)
14CFS94-38	2400	5-3/4" (146 mm)	1.6 lbs (0.7 kgs)
14CFS95-38	1000	6-7/8" (175 mm)	1.8 lbs (0.8 kgs)
14CFS96-38	700	6-7/8" (175 mm)	1.8 lbs (0.8 kgs)
14CFS97-38	600	6-7/8" (175 mm)	1.8 lbs (0.8 kgs)

1/4" Capacity - 0.6 hp (0.45 kW) - Non-Reversible			
Part Number	Free RPM	Overall Length	Weight
14CSL90-38	20,000	6-3/8" (160 mm)	2.1 lbs (1.0 kgs)
14CSL98-38	6000	6-3/8" (160 mm)	2.1 lbs (1.0 kgs)
14CSL91-38	5200	6-3/8" (160 mm)	2.1 lbs (1.0 kgs)
14CSL92-38	3200	6-3/8" (160 mm)	2.1 lbs (1.0 kgs)

1/4" Capacity - 0.9 hp (0.67 kW) - Non-Reversible			
Part Number	Free RPM	Overall Length	Weight
14CNL90-38	20,000	6-7/8" (173 mm)	2.2 lbs (1.0 kgs)
14CNL98-38	6000	6-7/8" (173 mm)	2.2 lbs (1.0 kgs)
14CNL91-51	5200	7-1/4" (183 mm)	2.4 lbs (1.1 kgs)
14CNL92-51	3200	7-1/4" (183 mm)	2.4 lbs (1.1 kgs)

3/8" Capacity - 0.6 hp (0.45 kW) - Non-Reversible			
Part Number	Free RPM	Overall Length	Weight
14CSL95-51	1300	8-1/8" (205 mm)	2.9 lbs (1.3 kgs)
14CSL97-51	500	8-1/8" (205 mm)	2.9 lbs (1.3 kgs)

3/8" Capacity - 0.9 hp (0.67 kW) - Non-Reversible			
Part Number	Free RPM	Overall Length	Weight
14CNL95-51	1300	8-5/8" (218 mm)	2.8 lbs (1.3 kgs)

1/2" Capacity - 0.9 hp (0.67 kW) - Non-Reversible			
Part Number	Free RPM	Overall Length	Weight
14CNL97-53	500	9-1/8" (231 mm)	3.5 lbs (1.6 kgs)

Desoutter® Composite Grip Air Drills



DR350-P20000-C8

- Composite pistol grip construction for enhanced operator comfort.
- Powered with a 0.5 HP oil-free "dryline" modular motor.
- Teasing throttle & integral exhaust.

* Side handle included on these models.

5/16" Capacity - 0.5 hp (0.35 kW) - Non-Reversible			
Part Number	RPM	Overall Length	Weight
DR350-P20000-C8	20,000	4-3/4" (120 mm)	1.1 lbs (0.49 kgs)
DR350-P4500-C8	4500	5-3/8" (136 mm)	1.1 lbs (0.49 kgs)
DR350-P3000-C8	3000	5-3/8" (136 mm)	1.1 lbs (0.49 kgs)

3/8" Capacity - 0.5 hp (0.35 kW) - Non-Reversible			
Part Number	RPM	Overall Length	Weight
DR350-P1000-C10*	1000	6" (154 mm)	1.3 lbs (0.57 kgs)
DR350-P550-C10*	550	6" (154 mm)	1.3 lbs (0.57 kgs)

Chicago Pneumatic® Air Drills



CP1014P05

CP1014P24

- Designed for industrial production with high power and durability in an ergonomic and compact body.
- Comfortable new design.
- Teasing throttle & Jacobs keyed chuck.

Note: Air Inlet 1/4" NPT. 3/8"-24 spindle thread.

1/4" Capacity - 0.5 hp (0.375 kW) - Non-Reversible			
Part Number	RPM	Overall Length	Weight
CP1014P24	2400	6-3/4" (160 mm)	1.2 lbs (0.5 kgs)
CP1014P33	3300	6-3/4" (160 mm)	1.2 lbs (0.5 kgs)
CP1014P45	4500	6-3/4" (160 mm)	1.2 lbs (0.5 kgs)

3/8" Capacity - 0.5 hp (0.375 kW) - Non-Reversible			
Part Number	RPM	Overall Length	Weight
CP1014P05	500	7-3/4" (195 mm)	1.4 lbs (0.6 kgs)

AIR DRILLS & ACCESSORIES

Sioux® High Power Aviation Air Drills



Precision Signature Series Drills

- Lightweight aluminum housing with ergonomic handle & soft textured grip.
- Three planet gear system for increased life & load capacity.
- With teasing throttle & keyed chuck.

SDR10P25R3

Note: Air Inlet 1/4" NPT. 3/8"-24 spindle thread except where noted.

1/4" Capacity - 1.0 hp (0.75 kW) - Non-Reversible			
Part Number	Free RPM	Overall Length	Weight
SDR10P60N2	6000	6-1/2" (165 mm)	2.3 lbs (1.0 kgs)
SDR10P40N2	4000	6-1/2" (165 mm)	2.3 lbs (1.0 kgs)

1/4" Capacity - 1.0 hp (0.75 kW) - Reversible			
Part Number	Free RPM	Overall Length	Weight
SDR10P25R2	2500	7-1/8" (181 mm)	2.4 lbs (1.1 kgs)

3/8" Capacity - 1.0 hp (0.75 kW) - Non-Reversible			
Part Number	Free RPM	Overall Length	Weight
SDR10P60N3	6000	7" (180 mm)	2.5 lbs (1.1 kgs)
SDR10P40N3	4000	7" (180 mm)	2.5 lbs (1.1 kgs)
SDR10P7N3*	700	8" (205 mm)	2.9 lbs (1.3 kgs)
SDR10P4N3*	400	8" (205 mm)	2.9 lbs (1.3 kgs)

3/8" Capacity - 1.0 hp (0.75 kW) - Reversible			
Part Number	Free RPM	Overall Length	Weight
SDR10P25R3	2500	7-5/8" (193 mm)	2.6 lbs (1.15 kgs)

1/2" Capacity - 1.0 hp (0.75 kW) - Non-Reversible			
Part Number	Free RPM	Overall Length	Weight
SDR10P7N4*	700	8-1/2" (215 mm)	3.3 lbs (1.5 kgs)
SDR10P4N4*	400	8-1/2" (215 mm)	3.3 lbs (1.5 kgs)

* 1/2"-20 spindle thread.



For Boelube® Drilling Lubricant See Page 232

Cleco® Variable Speed Air Drills



Includes Keyed Chuck

135DPV-14B-51

Versatile Governed Speed Control

- Calibrated dial on rear of tool simplifies drill speed selection.
- Choice of three governed speed models to match material.

3/8" Capacity - 0.7 hp (0.52 kW) - Non-Reversible				
Part Number	Free RPM	RPM (governed)	Overall Length	Weight
135DPV-7B-43	600	150 - 550	9-5/8" (244 mm)	3.625 lbs (1.6 kgs)
135DPV-14B-51	1250	400 - 1,200	9-1/4" (235 mm)	3.375 lbs (1.5 kgs)
135DPV-28B-51	2600	700 - 2,400	8-1/2" (216 mm)	3.125 lbs (1.4 kgs)

1/2" Capacity - 0.7 hp (0.52 kW) - Non-Reversible				
Part Number	Free RPM	RPM (governed)	Overall Length	Weight
135DPV-7B-50	600	150 - 550	9-5/8" (244 mm)	3.625 lbs (1.6 kgs)
135DPV-14B-50	1250	400 - 1,200	9-1/4" (235 mm)	3.375 lbs (1.5 kgs)

Support Handle

- Support handle included with all 1/2" capacity drills.

Part Number	Description
861006	Support Handle

Jet® R6 Series Air Drill



New Reversible Model

- Lightweight aluminum construction.
- Side mounted forward-reverse switch.
- Includes keyed chuck.

Note: Air Inlet 1/4" NPT. 3/8"-24 spindle thread.

3/8" Capacity - 0.5 hp (0.37 kW) - Reversible			
Part Number	Free RPM	Overall Length	Weight
JAT-600	2000	7-3/16" (183 mm)	2.5 lbs (1.1 kgs)

USATCO Offset 'Pancake' Air Drills



- Steel alloy cylinder & rotor.
- 1/4"-28 female thread.
- Full 360° rotating offset head great for limited access areas.

*Feather Trigger
For Precise
Control*

*Smooth,
Quiet
Operation*

Note: Air inlet 1/4" NPT. Uses threaded shank drills available on pages 22-23.

1/4" Capacity - 0.3 hp (0.22 kW) - Non-Reversible					
Part Number	Free RPM	Shaft Offset (A)	Offset Length (B)	Overall Length	Weight
13-1527	3000	2.49"	3.34"	7" (178 mm)	2.0 lbs (0.91 kgs)
13-1529	3000	3.83"	4.88"	7" (178 mm)	2.1 lbs (0.95 kgs)
13-1531	3000	5.18"	6.23"	7" (178 mm)	2.3 lbs (1.04 kgs)

USATCO Economy Mini Air Drill



Economically Priced

- Compact & lightweight.
- Teasing throttle.
- Includes keyed chuck.

1/4" Capacity - 0.3 hp (0.22 kW) - Non-Reversible			
Part Number	Free RPM	Overall Length	Weight
13-1127-25	3000	6-1/4" (159 mm)	1.5 lbs (0.7 kgs)

Chicago Pneumatic® Economy Air Drills



Durable & Cost Effective

- Good general speed tool with an industrial quality chuck.
- Hardened and ground precision parts for extended service life.

3/8" Capacity - 0.5 hp (0.37 kW) - Non-Reversible			
Part Number	Free RPM	Overall Length	Weight
CP785	2400	7" (178 mm)	2.25 lbs (1.0 kgs)

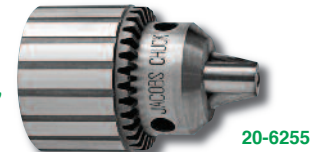
3/8" Capacity - 0.37 hp (0.27 kW) - Reversible			
Part Number	Free RPM	Overall Length	Weight
CP9790	2000	6-1/2" (165 mm)	3.0 lbs (1.4 kgs)

1/2" Capacity - 0.5 hp (0.37 kW) - Non-Reversible			
Part Number	Free RPM	Overall Length	Weight
CP785H*	500	7-3/4" (197 mm)	3.0 lbs (1.4 kgs)

* CP785H (1/2" capacity) includes required support handle.

Jacobs® Plain Bearing Chucks & Chuck Keys

*O.E.M. Standard For
Accuracy & Durability*



Part Number	Ref. Number	Capacity	Mount Thread	Key Number	Style
20-6200	0	5/32"	0 JT	K0	Smooth
20-6208	1B	1/4"	3/8-24	K1	Smooth
20-6255	7BA	1/4"	3/8-24	K7	Fluted
20-14700	41BA	3/8"	3/8-24	K30	Fluted
20-6283	33BA-3/8	1/2"	3/8-24	K32	Fluted
20-6138	33BA-1/2	1/2"	1/2-20	K32	Fluted



Chuck Keys

- Soft steel handles limit potential for fracturing under excessive load.

'T' Handle Keys		
Part No.	Model	Pilot Size
20-K0	K0	1/8"
20-K1	K1	5/32"

Thumb Handle Keys		
Part No.	Model	Pilot Size
20-K7	K7	7/32"
20-K30	K30	15/64"
20-K32	K32	1/4"

AIR DRILLS & ACCESSORIES

Jacobs® Hand-Tite Keyless Drilling Chucks

Ergonomic Design

- Keyless operation.
- Superior gripping force.

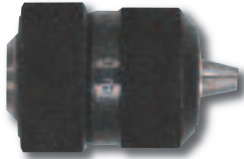


Part Number	Capacity Range	Mount Thread
20-30360	3/64" to 3/8"	3/8"-24
20-31038	1/16" to 1/2"	1/2"-20
20-31037	1/16" to 1/2"	3/8"-24

Heavy-Duty Keyless Chucks

All Steel Construction

Works with reversible and non-reversible drills.



Part Number	Capacity Range	Mount Thread
20-520	0 - 3/8"	3/8"-24
20-522	1/16" - 1/2"	3/8"-24

Keyless Impact Chucks

Square Drive, Keyless Design

Transform your impact wrench into an efficient drilling tool with superior holding power.



Note: For use with standard impact tools, see pages 136-137.

Part Number	Capacity	Sq. Drive Mount	O.A.L. (open)
20-90424	3/32" to 3/8"	3/8"	2-3/32" (53 mm)
20-90430	1/8" to 1/2"	1/2"	2-5/8" (67 mm)

Micro Drill Chuck

- Used with very small dia. drills in a drill press or handheld tool.
- Grips firmly and accurately in sizes as small as a human hair.
- Can be held in any 1/8" or 3/16" collet or larger adj. drill chuck.



Part Number	Accepts Drill Sizes
67-149-5	#60 to #80 Wire Gauge

Threaded Shank Drill Adapters

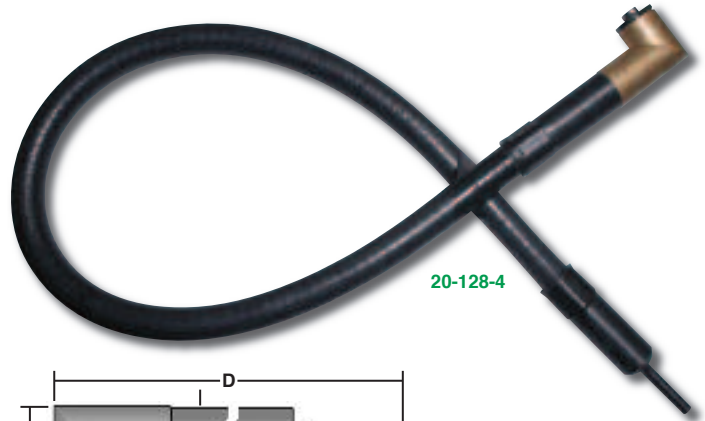
Great For Cordless Drills

Allows a chucked drill to accept threaded shank bits.

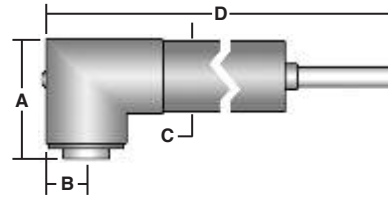


Part Number	Shank	Thread
70456	1/4" Hex	1/4"-28
70449	1/4" Hex	10-32

USATCO Snake Drill Attachments



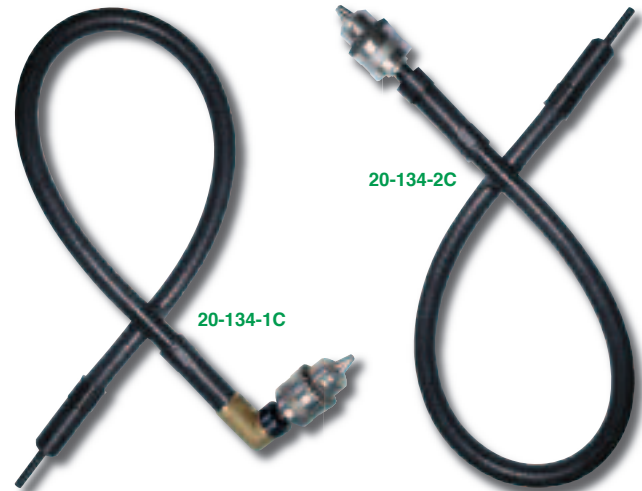
20-128-4



Excellent Drilling Solutions For Hard To Reach Areas

90° Angle Head, 1/4" Capacity, 1/4"-28 Thread				
Part Number	Head Height (A)	Side To Center (B)	Diameter (C)	Overall Length (D)
20-128-4	1-9/32" (33 mm)	0.384" (10 mm)	3/4" (19 mm)	30" (76 cm)

90° Mini Angle Head, 5/16" Capacity, 10-32 Thread				
Part Number	Head Height (A)	Side To Center (B)	Diameter (C)	Overall Length (D)
20-132-20	15/16" (24 mm)	0.275" (7 mm)	11/16" (18 mm)	22" (56 cm)



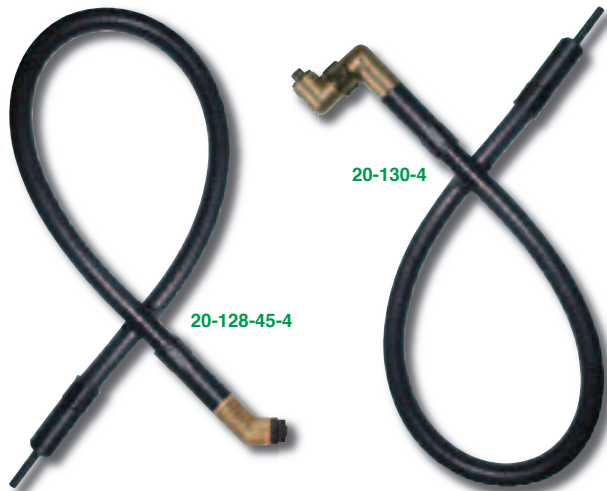
20-134-2C

20-134-1C

90° Angle Head With Jacobs Chuck, 1/4" Capacity				
Part Number	Head Height (A)	Side To Center (B)	Diameter (C)	Overall Length (D)
20-134-1C	2-7/8" (73 mm)	0.565" (14 mm)	3/4" (19 mm)	30" (76 cm)

Straight Head With Jacobs Chuck, 1/4" Capacity				
Part Number	Head Height (A)	Side To Center (B)	Diameter (C)	Overall Length (D)
20-134-2C	—	0.565" (14 mm)	5/8" (16 mm)	30" (76 cm)

USATCO Snake Drill Attachments (cont'd)

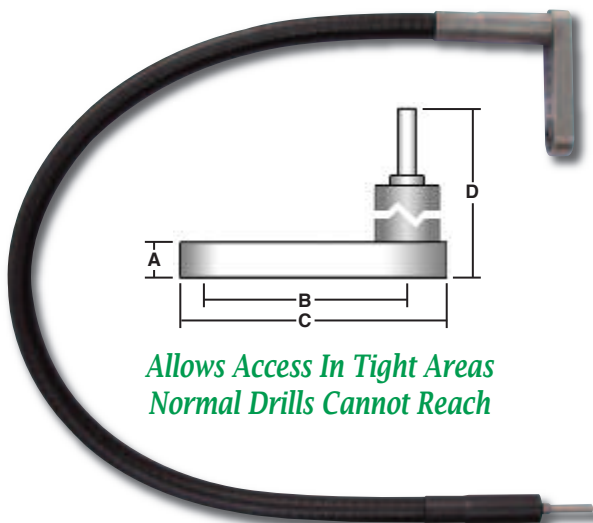


45° Angle Head, 1/4" Capacity, 1/4"-28 Thread				
Part Number	Head Height (A)	Side To Center (B)	Diameter (C)	Overall Length (D)
20-128-45-4	1-3/16" (30 mm)	0.400" (10 mm)	3/4" (19 mm)	30" (76 cm)

360° Adjustable Angle Head, 1/4" Capacity, 1/4"-28 Thread				
Part Number	Head Height (A)	Side To Center (B)	Diameter (C)	Overall Length (D)
20-130-4	1-1/4" (32 mm)	0.384" (10 mm)	3/4" (19 mm)	30" (76 cm)

Straight Head, 5/16" Capacity, 1/4"-28 Thread				
Part Number	Head Height (A)	Side To Center (B)	Diameter (C)	Overall Length (D)
20-131-4	11/16" (18 mm)	5/8" (16 mm)	11/16" (18 mm)	22" (56 cm)

USATCO Offset 'Pancake' Snake Drill Att.



*Allows Access In Tight Areas
Normal Drills Cannot Reach*

Flat Offset Head, 1/4" Capacity, 1/4"-28 Thread				
Part Number	(A) Offset Thickness	Shaft Offset (B)	Offset Length (C)	Overall Length (D)
20-T-635	7/16" (11 mm)	2-5/16" (59 mm)	3-3/16" (81 mm)	30" (76 cm)

360° Snake Drill Attachment



- Angle head rotates a full 360° & can be locked in any position.
- 20-M3 chuck (accepts straight shank drills).
- Includes wrenches & allen key.

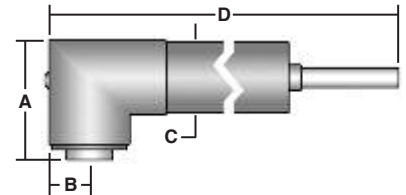
Note: Chart references snake attachment illustration on previous page.

360° Adjustable Angle Head, 1/4" Capacity, 1/4"-28 Thread				
Part Number	Head Height (A)	Side To Center (B)	Diameter (C)	Overall Length (D)
20-128-360	3" (76 mm)	0.385" (10 mm)	0.608" (15 mm)	30" (76 cm)

USATCO Angle Drill Attachments

*Quickly Connect
To Any Drill Chuck*

Convenient & inexpensive
close quarter drilling tools.



90° Angle Head, 1/4" Capacity, 1/4"-28 Thread				
Part Number	Head Height (A)	Side To Center (B)	Diameter (C)	Overall Length (D)
20-127-4	1-9/32" (33 mm)	1-1/4" (32 mm)	3/4" (19 mm)	7-1/8" (181 mm)



90° Mini Angle Head, 1/4" Capacity, 10-32 Thread				
Part Number	Head Height (A)	Side To Center (B)	Diameter (C)	Overall Length (D)
20-133-20	1-3/16" (30 mm)	0.212" (5 mm)	1/2" (13 mm)	6" (155 mm)



45° Angle Head, 5/32" Capacity, 1/4"-28 Thread				
Part Number	Head Height (A)	Side To Center (B)	Diameter (C)	Overall Length (D)
20-127-45-4	1-3/16" (30 mm)	0.400" (10 mm)	3/4" (19 mm)	7-1/2" (191 mm)

AIR DRILLS & ACCESSORIES

USATCO Angle Drill Attachments (cont'd)



90° Angle Head With Keyed Chuck, 5/32" Capacity				
Part Number	Head Height (A)	Side To Center (B)	Diameter (C)	Overall Length (D)
53-127-4C	2-7/16" (62 mm)	0.425" (11 mm)	3/4" (19 mm)	7-1/8" (181 mm)



Note: Shaft offset: 1-7/16" (37 mm).

360° Rotating Offset Head, 1/4" Capacity, 1/4"-28 Thread				
Part Number	Head Height (A)	Side To Center (B)	Diameter (C)	Overall Length (D)
20-129-4	1-1/4" (32 mm)	0.384" (10 mm)	3/4" (19 mm)	7-5/8" (194 mm)

USATCO Angle Drill Attachment Kit



Kit Includes:

Angle Drill Attachment (20-127-4), Threaded Shank Drill Bits (1 each #40, #30, #21 & #10), Gear Lubricator, Gear Lube, Wrench, Repair Parts List & Plastic Kit Box (not shown)

Part Number	Description
53-127K	Complete 9 PC Kit

Socket Drive Angle Drill Attachment



Note: Chart references angle attachment illustration on previous page.

90° Angle Head, 1/4" Square Drive				
Part Number	Head Height (A)	Side To Center (B)	Diameter (C)	Overall Length (D)
20-350	1.60" (41 mm)	1-3/8" (35 mm)	3/4" (19 mm)	7" (178 mm)

Drill Attachment Conversion Assembly

- Convert any angle or snake drill attachment to convenient keyed chuck mode.
- Includes 1/4"-28 thd. adapter, 5/32" cap. chuck & chuck key.



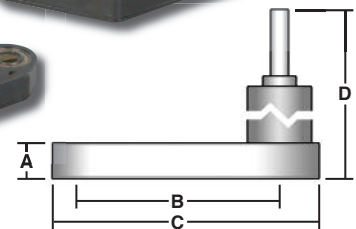
Part Number	Diameter	Side To Center	Overall Length
53-77	0.85" (21.6 mm)	0.45" (11.4 mm)	1.65" (42 mm)

Thin Offset Angle Drill Attachments



For Limited Access Areas

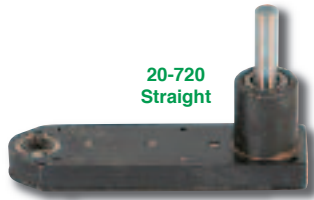
- Hardened and ground bearings & support shafts provide longer tool life.
- 1/4"-28 thread standard.



Straight - 1/4" Offset Thickness (A)			
Part No.	Shaft Offset (B)	Offset Length (C)	Overall Length (D)
20-820	2-7/16" (62 mm)	3-3/16" (81 mm)	11/16" (18 mm)
20-825	2-7/16" (62 mm)	3-3/16" (81 mm)	5-3/16" (132 mm)
20-830	3-3/4" (95 mm)	4-1/2" (114 mm)	11/16" (18 mm)
20-835	3-3/4" (95 mm)	4-1/2" (114 mm)	5-3/16" (132 mm)

30° Offset - 0.290" Offset Thickness (A)			
Part No.	Shaft Offset (B)	Offset Length (C)	Overall Length (D)
20-845	Right	4" (102 mm)	4-5/16" (110 mm)
20-855	Left	4" (102 mm)	4-5/16" (110 mm)

Thin Offset Angle Drill Attachments (cont'd)



20-720
Straight

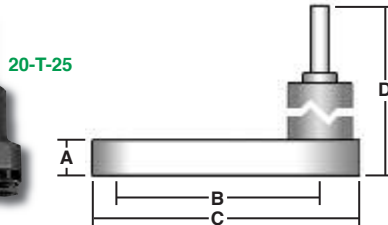
Straight - 3/8" Offset Thickness (A)			
Part No.	Shaft Offset (B)	Offset Length (C)	Overall Length (D)
20-720	2-7/16" (62 mm)	3-3/16" (81 mm)	1-1/8" (29 mm)
20-725	2-7/16" (62 mm)	3-3/16" (81 mm)	4-9/16" (116 mm)
20-730	3-3/4" (95 mm)	4-1/2" (114 mm)	1-1/8" (29 mm)
20-735	3-3/4" (95 mm)	4-1/2" (114 mm)	4-9/16" (116 mm)

30° Offset - 3/8" Offset Thickness (A)			
Part No.	Shaft Offset (B)	Offset Length (C)	Overall Length (D)
20-745	3-1/8" R (79 mm)	4" (102 mm)	4-9/16" (116 mm)
20-755	3-1/8" L (79 mm)	4" (102 mm)	4-9/16" (116 mm)

Flat Offset Angle Drill Attachments



*Perfect For Work
In Tight Areas*



20-T-25

Note: 1/4"-28 thread standard. Also available with 10-32 thread, please inquire.

1/8" Capacity - 1/4" Offset Thickness (A)			
Part No.	Shaft Offset (B)	Offset Length (C)	Overall Length (D)
20-T-21	3/4" (19 mm)	1-1/2" (38 mm)	5-5/8" (143 mm)

1/4" Capacity - 7/16" Offset Thickness (A)			
Part No.	Shaft Offset (B)	Offset Length (C)	Overall Length (D)
20-T-23	1-5/32" (29 mm)	2-3/16" (56 mm)	6-1/2" (165 mm)
20-T-25	2-5/16" (59 mm)	3-3/16" (81 mm)	2" (51 mm)
20-T-235	2-5/16" (59 mm)	3-3/16" (81 mm)	6-5/8" (168 mm)

IRWIN Unibit® Step Drill Sets

*Versatile &
Economical*



02-10502

*Preferred By
Mechanics*



02-10225

- Money saving sets provide a wide range of hole sizes.
- 4 PC set includes hard plastic carrying case.

Part Number	Description	Hole Sizes - 1/8" Material (max.)	Hole Sizes - 3/8" Material (max.)
02-10502	3 PC Set	1/8" to 3/4"	3/16" to 1/2"
02-10225	4 PC Set	1/8" to 1-3/8"	3/16" to 1/2"

IRWIN Unibit® Self-Starting Step Drills

- Single flute cutting edge for greater control through steps.
- Hex shank prevents slipping in drill chuck.
- Many other styles & sizes available, please inquire.

02-10101T



Fractional Step Drills					
Part No. H.S.S.	Part No. TiN Coated	# Of Holes	Hole Size Range	Shank Size	Max. Material Thickness
02-10101	02-10101T	13	1/8" to 1/2"	1/4"	1/8"
02-10102	02-10102T	6	3/16" to 1/2"	1/4"	3/8"
02-10103	02-10103T	9	1/4" to 3/4"	3/8"	1/8"
02-10104	02-10104T	12	3/16" to 7/8"	3/8"	1/8"
02-10105	—	10	1/4" to 1-3/8"	1/2"	1/8"

Metric Step Drills					
Part No. H.S.S.	Part No. TiN Coated	# Of Holes	Hole Size Range	Shank Size	Max. Material Thickness
02-11101	02-11101T	9	4 to 12 mm	6.35 mm	5 mm
02-11102	02-11102T	5	4 to 12 mm	6.35 mm	11 mm
02-11103	02-11103T	7	6 to 18 mm	9.53 mm	5 mm
02-11104	02-11104T	10	4 to 22 mm	9.53 mm	5 mm
02-11105	02-11105T	13	5 to 35 mm	12.70 mm	3.5 mm

AIR DRILLS & ACCESSORIES

Aircraft Quality Jobber's Length Drills

Made to NAS907 Specifications



Wire Gauge: Sold 12 per pack (all sizes).

Note: To order, select desired drill type (prefix) & add the desired drill size (suffix). Example: For a #30 H.S.S. (118° split point) drill, the number would be 02-R18A-30

Wire Gauge Part Number (Prefix)				02-R18A	02-R18B	02-R18C	02-R18D	02-D2S	02-D2E
Wire Gauge Size (Suffix)	Decimal Equivalent	Flute Length	Overall Length	H.S.S. (118° SP)	H.S.S. (135° SP)	Cobalt (135° SP)	TiN Coated (118° SP)	Carbide Tipped	Carbide (118° SP)
1	.2280"	2-5/8"	3-7/8"
2	.2210"	2-5/8"	3-7/8"
3	.2130"	2-1/2"	3-3/4"
4	.2090"	2-1/2"	3-3/4"
5	.2055"	2-1/2"	3-3/4"
6	.2040"	2-1/2"	3-3/4"
7	.2010"	2-7/16"	3-5/8"
8	.1990"	2-7/16"	3-5/8"
9	.1960"	2-7/16"	3-5/8"
10	.1935"	2-7/16"	3-5/8"
11	.1910"	2-5/16"	3-1/2"
12	.1890"	2-5/16"	3-1/2"
13	.1850"	2-5/16"	3-1/2"
14	.1820"	2-3/16"	3-3/8"
15	.1800"	2-3/16"	3-3/8"
16	.1770"	2-3/16"	3-3/8"
17	.1730"	2-3/16"	3-3/8"
18	.1695"	2-1/8"	3-1/4"
19	.1660"	2-1/8"	3-1/4"
20	.1610"	2-1/8"	3-1/4"
21	.1590"	2-1/8"	3-1/4"
22	.1570"	2"	3-1/8"
23	.1540"	2"	3-1/8"
24	.1520"	2"	3-1/8"
25	.1495"	1-7/8"	3"
26	.1470"	1-7/8"	3"
27	.1440"	1-7/8"	3"
28	.1405"	1-3/4"	2-7/8"
29	.1360"	1-3/4"	2-7/8"
30	.1285"	1-5/8"	2-3/4"
31	.1200"	1-5/8"	2-3/4"
32	.1160"	1-5/8"	2-3/4"	N/A	.
33	.1130"	1-1/2"	2-5/8"	N/A	.
34	.1110"	1-1/2"	2-5/8"	N/A	.
35	.1100"	1-1/2"	2-5/8"	N/A	.
36	.1065"	1-7/16"	2-1/2"	N/A	.
37	.1040"	1-7/16"	2-1/2"	N/A	.
38	.1015"	1-7/16"	2-1/2"	N/A	.
39	.0995"	1-3/8"	2-3/8"	N/A	.
40	.0980"	1-3/8"	2-3/8"	N/A	.
41	.0969"	1-3/8"	2-3/8"	N/A	.
42	.0935"	1-1/4"	2-1/4"	N/A	.
43	.0890"	1-1/4"	2-1/4"	N/A	.
44	.0860"	1-1/8"	2-1/8"	N/A	.
45	.0820"	1-1/8"	2-1/8"	N/A	.
46	.0810"	1-1/8"	2-1/8"	N/A	.
47	.0785"	1"	2"	N/A	.
48	.0760"	1"	2"	N/A	.
49	.0730"	1"	2"	N/A	.
50	.0700"	1"	2"	N/A	.
51	.0670"	1"	2"	N/A	.
52	.0635"	7/8"	1-7/8"	N/A	.
53	.0595"	7/8"	1-7/8"	N/A	N/A	.	.	N/A	.
54	.0550"	7/8"	1-7/8"	N/A	N/A	.	.	N/A	.
55	.0520"	7/8"	1-7/8"	N/A	N/A	.	.	N/A	.
56	.0465"	3/4"	1-3/4"	N/A	N/A	.	.	N/A	.
57	.0430"	3/4"	1-3/4"	N/A	N/A	.	.	N/A	.
58	.0420"	11/16"	1-5/8"	N/A	N/A	.	.	N/A	N/A
59	.0410"	11/16"	1-5/8"	N/A	N/A	.	.	N/A	N/A
60	.0400"	11/16"	1-5/8"	N/A	N/A	.	.	N/A	N/A

Aircraft Quality Jobber's Length Drills (cont'd)

Made to NAS907 Specifications



Fractional: Sold 12 per pack (1/16"-19/64"),
6 per pack (5/16"-1/2").

Note: To order, select desired drill type (prefix) & add the desired drill size (suffix). **Example:** For a 1/4" H.S.S. (118° split point) drill, the number would be **02-R10A-1/4**

Fractional Part Number (Prefix)				02-R10A	02-R10B	02-R10C	02-R10D	02-D2S	02-D2E
Fractional Size (Suffix)	Decimal Equivalent	Flute Length	Overall Length	H.S.S. (118° SP)	H.S.S. (135° SP)	Cobalt (135° SP)	TiN Coated (118° SP)	Carbide Tipped	Carbide (118° SP)
1/16	.0625"	7/8"	1-7/8"	•	•	•	•	N/A	•
5/64	.0781"	1"	2"	•	•	•	•	N/A	•
3/32	.0938"	1-1/4"	2-1/4"	•	•	•	•	N/A	•
7/64	.1094"	1-1/2"	2-5/8"	•	•	•	•	N/A	•
1/8	.1250"	1-5/8"	2-3/4"	•	•	•	•	•	•
9/64	.1406"	1-3/4"	2-7/8"	•	•	•	•	•	•
5/32	.1562"	2"	3-1/8"	•	•	•	•	•	•
11/64	.1719"	2-1/8"	3-1/4"	•	•	•	•	•	•
3/16	.1875"	2-5/16"	3-1/2"	•	•	•	•	•	•
13/64	.2031"	2-7/16"	3-5/8"	•	•	•	•	•	•
7/32	.2188"	2-1/2"	3-3/4"	•	•	•	•	•	•
15/64	.2344"	2-5/8"	3-7/8"	•	•	•	•	•	•
1/4	.2500"	2-3/4"	4"	•	•	•	•	•	•
17/64	.2656"	2-7/8"	4-1/8"	•	•	•	•	•	•
9/32	.2812"	2-15/16"	4-1/4"	•	•	•	•	•	•
19/64	.2969"	3-1/16"	4-3/8"	•	•	•	•	•	•
5/16	.3125"	3-3/16"	4-1/2"	•	•	•	•	•	•
21/64	.3281"	3-5/16"	4-5/8"	•	•	•	•	•	•
11/32	.3438"	3-7/16"	4-3/4"	•	•	•	•	•	•
23/64	.3594"	3-1/2"	4-7/8"	•	•	•	•	•	•
3/8	.3750"	3-5/8"	5"	•	•	•	•	•	•
25/64	.3906"	3-3/4"	5-1/8"	•	•	•	•	•	•
13/32	.4062"	3-7/8"	5-1/4"	•	•	•	•	•	•
27/64	.4219"	3-15/16"	5-3/8"	•	•	•	•	•	•
7/16	.4375"	4-1/16"	5-1/2"	•	•	•	•	•	•
29/64	.4531"	4-3/16"	5-5/8"	•	•	•	•	•	•
15/32	.4688"	4-5/16"	5-3/4"	•	•	•	•	•	•
31/64	.4844"	4-3/8"	5-7/8"	•	•	•	•	•	•
1/2	.5000"	4-1/2"	6"	•	•	•	•	•	•

Letter: Sold 12 per pack (A-N) & 6 per pack (O-Z).

Letter Part Number (Prefix)				02-R15A	02-R15B	02-R15C	02-D2S	02-D2E
Letter Size (Suffix)	Decimal Equivalent	Flute Length	Overall Length	H.S.S. (118° SP)	H.S.S. (135° SP)	Cobalt (135° SP)	Carbide Tipped	Carbide (118° SP)
A	.2340"	2-5/8"	3-7/8"	•	•	•	•	•
B	.2380"	2-3/4"	4"	•	•	•	•	•
C	.2420"	2-3/4"	4"	•	•	•	•	•
D	.2460"	2-3/4"	4"	•	•	•	•	•
E	.2500"	2-3/4"	4"	•	•	•	•	•
F	.2570"	2-7/8"	4-1/8"	•	•	•	•	•
G	.2610"	2-7/8"	4-1/8"	•	•	•	•	•
H	.2660"	2-7/8"	4-1/8"	•	•	•	•	•
I	.2720"	2-7/8"	4-1/8"	•	•	•	•	•
J	.2770"	2-7/8"	4-1/8"	•	•	•	•	•
K	.2810"	2-15/16"	4-1/4"	•	•	•	•	•
L	.2900"	2-15/16"	4-1/4"	•	•	•	•	•
M	.2950"	3-1/16"	4-3/8"	•	•	•	•	•
N	.3020"	3-1/16"	4-3/8"	•	•	•	•	•
O	.3160"	3-3/16"	4-1/2"	•	•	•	•	•
P	.3230"	3-5/16"	4-5/8"	•	•	•	•	•
Q	.3320"	3-7/16"	4-3/4"	•	•	•	•	•
R	.3390"	3-7/16"	4-3/4"	•	•	•	•	•
S	.3480"	3-1/2"	4-7/8"	•	•	•	•	•
T	.3580"	3-1/2"	4-7/8"	•	•	•	•	•
U	.3680"	3-5/8"	5"	•	•	•	•	•
V	.3770"	3-5/8"	5"	•	•	•	•	•
W	.3860"	3-3/4"	5-1/8"	•	•	•	•	•
X	.3970"	3-3/4"	5-1/8"	•	•	•	•	•
Y	.4040"	3-7/8"	5-1/4"	•	•	•	•	•
Z	.4130"	3-7/8"	5-1/4"	•	•	•	•	•

AIR DRILLS & ACCESSORIES

Aircraft Quality Jobber's Length Drills (cont'd)

Made to NAS907 Specifications



Metric: Sold 12 per pack (0.35-7.50mm).

Note: To order, select desired drill type (prefix) & add the desired drill size (suffix). Example: For a 2.0mm H.S.S. (118° split point) drill, the number would be 02-2A-2.00

Metric Part Number (Prefix)				02-2A	02-2AC
Metric Size (Suffix)	Decimal Equivalent	Flute Length	Overall Length	H.S.S. (118° SP)	Cobalt (135°)
.35	.0138"	3 mm	19 mm	•	N/A
.40	.0158"	5 mm	20 mm	•	N/A
.45	.0177"	5 mm	20 mm	•	N/A
.50	.0197"	5 mm	22 mm	•	N/A
.55	.0217"	6 mm	24 mm	•	N/A
.60	.0236"	8 mm	24 mm	•	N/A
.65	.0256"	10 mm	26 mm	•	N/A
.70	.0276"	10 mm	28 mm	•	N/A
.75	.0295"	13 mm	28 mm	•	N/A
.80	.0315"	13 mm	30 mm	•	N/A
.85	.0335"	16 mm	30 mm	•	N/A
.90	.0354"	16 mm	32 mm	•	N/A
.95	.0374"	16 mm	32 mm	•	N/A
1.00	.0394"	17 mm	34 mm	•	•
1.05	.0413"	17 mm	34 mm	•	•
1.10	.0433"	19 mm	36 mm	•	•
1.15	.0453"	19 mm	36 mm	•	•
1.20	.0472"	22 mm	38 mm	•	•
1.25	.0492"	22 mm	38 mm	•	•
1.30	.0512"	22 mm	38 mm	•	•
1.35	.0531"	22 mm	40 mm	•	•
1.40	.0551"	22 mm	40 mm	•	•
1.45	.0571"	22 mm	40 mm	•	•
1.50	.0591"	22 mm	40 mm	•	•
1.55	.0610"	22 mm	43 mm	•	•
1.60	.0630"	22 mm	43 mm	•	•
1.65	.0650"	25 mm	43 mm	•	•
1.70	.0669"	25 mm	43 mm	•	•
1.75	.0689"	25 mm	46 mm	•	•
1.80	.0709"	25 mm	46 mm	•	•
1.85	.0728"	25 mm	46 mm	•	•
1.90	.0748"	25 mm	46 mm	•	•
1.95	.0768"	25 mm	49 mm	•	•
2.00	.0787"	25 mm	49 mm	•	•
2.05	.0807"	29 mm	49 mm	•	•
2.10	.0827"	29 mm	49 mm	•	•
2.15	.0846"	29 mm	53 mm	•	•
2.20	.0866"	32 mm	53 mm	•	•
2.25	.0886"	32 mm	53 mm	•	•
2.30	.0906"	32 mm	53 mm	•	•
2.35	.0925"	32 mm	53 mm	•	•
2.40	.0945"	35 mm	57 mm	•	•
2.45	.0965"	35 mm	57 mm	•	•
2.50	.0984"	35 mm	57 mm	•	•
2.60	.1024"	37 mm	57 mm	•	•
2.70	.1063"	37 mm	61 mm	•	•
2.75	.1083"	37 mm	61 mm	•	•
2.80	.1102"	38 mm	61 mm	•	•
2.90	.1142"	41 mm	61 mm	•	•
3.00	.1181"	41 mm	61 mm	•	•
3.10	.1220"	41 mm	65 mm	•	•
3.20	.1260"	41 mm	65 mm	•	•
3.25	.1280"	41 mm	65 mm	•	•
3.30	.1299"	44 mm	65 mm	•	•
3.40	.1339"	44 mm	70 mm	•	•
3.50	.1378"	44 mm	70 mm	•	•
3.60	.1417"	48 mm	70 mm	•	•
3.70	.1457"	48 mm	70 mm	•	•
3.75	.1476"	48 mm	75 mm	•	•
3.80	.1496"	48 mm	75 mm	•	•

Metric Part Number (Prefix)				02-2A	02-2AC
Metric Size (Suffix)	Decimal Equivalent	Flute Length	Overall Length	H.S.S. (118° SP)	Cobalt (135°)
3.90	.1535"	51 mm	75 mm	•	•
4.00	.1575"	54 mm	75 mm	•	•
4.10	.1614"	54 mm	75 mm	•	•
4.20	.1654"	54 mm	75 mm	•	•
4.25	.1673"	54 mm	80 mm	•	•
4.30	.1693"	54 mm	80 mm	•	•
4.40	.1739"	56 mm	80 mm	•	•
4.50	.1772"	56 mm	80 mm	•	•
4.60	.1811"	56 mm	80 mm	•	•
4.70	.1850"	59 mm	80 mm	•	•
4.75	.1870"	59 mm	86 mm	•	•
4.80	.1890"	59 mm	86 mm	•	•
4.90	.1929"	62 mm	86 mm	•	•
5.00	.1968"	62 mm	86 mm	•	•
5.10	.2008"	62 mm	86 mm	•	•
5.20	.2047"	64 mm	86 mm	•	•
5.25	.2067"	64 mm	86 mm	•	•
5.30	.2087"	64 mm	86 mm	•	•
5.40	.2126"	64 mm	93 mm	•	•
5.50	.2165"	64 mm	93 mm	•	•
5.60	.2205"	67 mm	93 mm	•	•
5.70	.2244"	67 mm	93 mm	•	•
5.75	.2264"	67 mm	93 mm	•	•
5.80	.2283"	67 mm	93 mm	•	•
5.90	.2323"	67 mm	93 mm	•	•
6.00	.2362"	70 mm	93 mm	•	•
6.10	.2402"	70 mm	101 mm	•	•
6.20	.2441"	70 mm	101 mm	•	•
6.25	.2461"	70 mm	101 mm	•	•
6.30	.2480"	70 mm	101 mm	•	•
6.40	.2520"	73 mm	101 mm	•	•
6.50	.2559"	73 mm	101 mm	•	•
6.60	.2598"	73 mm	101 mm	•	•
6.70	.2638"	73 mm	101 mm	•	•
6.75	.2657"	73 mm	109 mm	•	•
6.80	.2677"	73 mm	109 mm	•	•
6.90	.2717"	73 mm	109 mm	•	•
7.00	.2756"	73 mm	109 mm	•	•
7.10	.2795"	75 mm	109 mm	•	•
7.20	.2835"	75 mm	109 mm	•	•
7.25	.2854"	75 mm	109 mm	•	•
7.30	.2874"	75 mm	109 mm	•	•
7.40	.2913"	78 mm	109 mm	•	•
7.50	.2953"	78 mm	109 mm	•	•



For A Wide Selection Of Deburring Tools See Pages 92-95

Aircraft Quality Extension Length Drills

Made to NAS907 Specs



Wire Gauge: Sold 12 per pack (6": #1-60, 12": #11-60) & 6 per pack (12": #1-10).

Note: To order, select desired drill type (prefix) & add the desired drill size (suffix). **Example:** For a #20, 6" cobalt (135° split point) drill, the number would be **02-501-6-20C**

Wire Gauge Part Number (Prefix)			02-501-6	02-501-12	02-501-6_C	02-501-12_C	02-2610	02-2611
Wire Gauge Size (Suffix)	Decimal Equivalent	Flute Length	6" H.S.S. (135° SP)	12" H.S.S. (135° SP)	6" Cobalt (135° SP)	12" Cobalt (135° SP)	6" Carbide Tip (135° SP)	12" Carbide Tip (135° SP)
1	.2280"	2-5/8"
2	.2210"	2-5/8"
3	.2130"	2-1/2"
4	.2090"	2-1/2"
5	.2055"	2-1/2"
6	.2040"	2-1/2"
7	.2010"	2-7/16"
8	.1990"	2-7/16"
9	.1960"	2-7/16"
10	.1935"	2-7/16"
11	.1910"	2-5/16"
12	.1890"	2-5/16"
13	.1850"	2-5/16"
14	.1820"	2-3/16"
15	.1800"	2-3/16"
16	.1770"	2-3/16"
17	.1730"	2-3/16"
18	.1695"	2-1/8"
19	.1660"	2-1/8"
20	.1610"	2-1/8"
21	.1590"	2-1/8"
22	.1570"	2"
23	.1540"	2"
24	.1520"	2"
25	.1495"	1-7/8"
26	.1470"	1-7/8"
27	.1440"	1-7/8"
28	.1405"	1-3/4"
29	.1360"	1-3/4"
30	.1285"	1-5/8"
31	.1200"	1-5/8"
32	.1160"	1-5/8"
33	.1130"	1-1/2"	N/A	N/A
34	.1110"	1-1/2"	N/A	N/A
35	.1100"	1-1/2"	N/A	N/A
36	.1065"	1-7/16"	N/A	N/A
37	.1040"	1-7/16"	N/A	N/A
38	.1015"	1-7/16"	N/A	N/A
39	.0995"	1-3/8"	N/A	N/A
40	.0980"	1-3/8"	N/A	N/A
41	.0969"	1-3/8"	N/A	N/A
42	.0935"	1-1/4"	N/A	N/A
43	.0890"	1-1/4"	N/A	N/A
44	.0860"	1-1/8"	N/A	N/A
45	.0820"	1-1/8"	N/A	N/A
46	.0810"	1-1/8"	N/A	N/A
47	.0785"	1"	N/A	N/A
48	.0760"	1"	N/A	N/A
49	.0730"	1"	N/A	N/A
50	.0700"	1"	N/A	N/A
51	.0670"	1"	N/A	N/A
52	.0635"	7/8"	N/A	N/A
53	.0595"	7/8"	N/A	N/A
54	.0550"	7/8"	N/A	N/A
55	.0520"	7/8"	N/A	N/A
56	.0465"	3/4"	N/A	N/A
57	.0430"	3/4"	N/A	N/A
58	.0420"	11/16"	N/A	N/A
59	.0410"	11/16"	N/A	N/A
60	.0400"	11/16"	N/A	N/A

AIR DRILLS & ACCESSORIES

Aircraft Quality Extension Length Drills

Made to NAS907 Specs



Letter: Sold 12 per pack (6": A-F), 6 per pack (6": G-Z, 12": A-R) & 3 per pack (12": S-Z).

Note: To order, select desired drill type (prefix) & add the desired drill size (suffix). Example: For a 1/4", 6" H.S.S. (135° split point) drill, the number would be 02-500-6-1/4

Letter Part Number (Prefix)			02-502-6	02-502-12	02-2610	02-2611
Letter Size (Suffix)	Decimal Equivalent	Flute Length	6" H.S.S. (135° SP)	12" H.S.S. (135° SP)	6" Carbide Tip (135° SP)	12" Carbide Tip (135° SP)
A	.2340"	2-5/8"
B	.2380"	2-3/4"
C	.2420"	2-3/4"
D	.2460"	2-3/4"
E	.2500"	2-3/4"
F	.2570"	2-7/8"
G	.2610"	2-7/8"
H	.2660"	2-7/8"
I	.2720"	2-7/8"
J	.2770"	2-7/8"
K	.2810"	2-15/16"
L	.2900"	2-15/16"
M	.2950"	3-1/16"
N	.3020"	3-1/16"
O	.3160"	3-1/16"
P	.3230"	3-5/16"
Q	.3320"	3-7/16"
R	.3390"	3-7/16"
S	.3480"	3-1/2"
T	.3580"	3-1/2"
U	.3680"	3-5/8"
V	.3770"	3-5/8"
W	.3860"	3-3/4"
X	.3970"	3-3/4"
Y	.4040"	3-7/8"
Z	.4130"	3-7/8"

Fractional: Sold 12 per pack (6": 1/16"-1/4", 12": 1/16"-11/64"), 6 per pack (6": 17/64"-1/2", 12": 3/16"-11/32") & 3 per pack (12": 23/64"-1/2").

Fractional Part Number (Prefix)			02-500-6	02-500-12	02-500-6_C	02-500-12_C	02-2610	02-2611
Fractional Size (Suffix)	Decimal Equivalent	Flute Length	6" H.S.S. (135° SP)	12" H.S.S. (135° SP)	6" Cobalt (135° SP)	12" Cobalt (135° SP)	6" Carbide Tip (135° SP)	12" Carbide Tip (135° SP)
1/16	.0625"	7/8"	N/A	N/A
5/64	.0781"	1"	N/A	N/A
3/32	.0938"	1-1/4"	N/A	N/A
7/64	.1094"	1-1/2"	N/A	N/A
1/8	.1250"	1-5/8"
9/64	.1406"	1-3/4"
5/32	.1562"	2"
11/64	.1719"	2-1/8"
3/16	.1875"	2-5/16"
13/64	.2031"	2-7/16"
7/32	.2188"	2-1/2"
15/64	.2344"	2-5/8"
1/4	.2500"	2-3/4"
17/64	.2656"	2-7/8"	.	.	N/A	N/A	.	.
9/32	.2812"	2-15/16"	.	.	N/A	N/A	.	.
19/64	.2969"	3-1/16"	.	.	N/A	N/A	.	.
5/16	.3125"	3-3/16"	.	.	N/A	N/A	.	.
21/64	.3281"	3-5/16"	.	.	N/A	N/A	.	.
11/32	.3438"	3-7/16"	.	.	N/A	N/A	.	.
23/64	.3594"	3-1/2"	.	.	N/A	N/A	.	.
3/8	.3750"	3-5/8"	.	.	N/A	N/A	.	.
25/64	.3906"	3-3/4"	.	.	N/A	N/A	.	.
13/32	.4062"	3-7/8"	.	.	N/A	N/A	.	.
27/64	.4219"	3-15/16"	.	.	N/A	N/A	.	.
7/16	.4375"	4-1/16"	.	.	N/A	N/A	.	.
29/64	.4531"	4-3/16"	.	.	N/A	N/A	.	.
15/32	.4688"	4-5/16"	.	.	N/A	N/A	.	.
31/64	.4844"	4-3/8"	.	.	N/A	N/A	.	.
1/2	.5000"	4-1/2"	.	.	N/A	N/A	.	.

Aircraft Quality Stubby Length Drills

Made to NAS907 Specifications



Wire Gauge: Sold 12 per pack (#1-60).
Fractional: Sold 12 per pack (1/16"-19/64") & 6 per pack (5/16"-1/2").

Note: To order, select desired drill type (prefix) & add the desired drill size (suffix). **Example:** For a #40 TiN coated (135° split point) drill, the number would be **02-R41C-40T**

Wire Gauge Part Number (Prefix)				02-R41C	02-R41C_C	02-R41C_T
Size (Suffix)	Decimal Equiv.	Flute Length	Overall Length	H.S.S. (135° SP)	Cobalt (135° SP)	TiN Coated (135° SP)
1	.2280"	1-5/16"	2-7/16"	•	•	•
2	.2210"	1-5/16"	2-7/16"	•	•	•
3	.2130"	1-1/4"	2-3/8"	•	•	•
4	.2090"	1-1/4"	2-3/8"	•	•	•
5	.2055"	1-1/4"	2-3/8"	•	•	•
6	.2040"	1-1/4"	2-3/8"	•	•	•
7	.2010"	1-3/16"	2-1/4"	•	•	•
8	.1990"	1-3/16"	2-1/4"	•	•	•
9	.1960"	1-3/16"	2-1/4"	•	•	•
10	.1935"	1-3/16"	2-1/4"	•	•	•
11	.1910"	1-3/16"	2-1/4"	•	•	•
12	.1890"	1-3/16"	2-1/4"	•	•	•
13	.1850"	1-1/8"	2-3/16"	•	•	•
14	.1820"	1-1/8"	2-3/16"	•	•	•
15	.1800"	1-1/8"	2-3/16"	•	•	•
16	.1770"	1-1/8"	2-3/16"	•	•	•
17	.1730"	1-1/8"	2-3/16"	•	•	•
18	.1695"	1-1/16"	2-1/8"	•	•	•
19	.1660"	1-1/16"	2-1/8"	•	•	•
20	.1610"	1-1/16"	2-1/8"	•	•	•
21	.1590"	1-1/16"	2-1/8"	•	•	•
22	.1570"	1-1/16"	2-1/8"	•	•	•
23	.1540"	1"	2-1/16"	•	•	•
24	.1520"	1"	2-1/16"	•	•	•
25	.1495"	1"	2-1/16"	•	•	•
26	.1470"	1"	2-1/16"	•	•	•
27	.1440"	1"	2-1/16"	•	•	•
28	.1405"	15/16"	1-15/16"	•	•	•
29	.1360"	15/16"	1-15/16"	•	•	•
30	.1285"	15/16"	1-15/16"	•	•	•
31	.1200"	7/8"	1-7/8"	•	•	•
32	.1160"	7/8"	1-7/8"	•	•	•
33	.1130"	7/8"	1-7/8"	•	•	•
34	.1110"	7/8"	1-7/8"	•	•	•
35	.1100"	7/8"	1-7/8"	•	•	•
36	.1065"	13/16"	1-13/16"	•	•	•
37	.1040"	13/16"	1-13/16"	•	•	•
38	.1015"	13/16"	1-13/16"	•	•	•
39	.0995"	13/16"	1-13/16"	•	•	•
40	.0980"	13/16"	1-13/16"	•	•	•
41	.0969"	13/16"	1-13/16"	•	•	•
42	.0935"	3/4"	1-3/4"	•	•	•
43	.0890"	3/4"	1-3/4"	•	•	•
44	.0860"	3/4"	1-3/4"	•	•	•
45	.0820"	3/4"	1-3/4"	•	•	•
46	.0810"	3/4"	1-3/4"	•	•	•
47	.0785"	11/16"	1-11/16"	•	•	•
48	.0760"	11/16"	1-11/16"	•	•	•
49	.0730"	11/16"	1-11/16"	•	•	•
50	.0700"	11/16"	1-11/16"	•	•	•
51	.0670"	11/16"	1-11/16"	•	•	•
52	.0635"	11/16"	1-11/16"	•	•	•
53	.0595"	5/8"	1-5/8"	•	•	•
54	.0550"	5/8"	1-5/8"	•	•	•
55	.0520"	5/8"	1-5/8"	•	•	•
56	.0465"	1/2"	1-3/8"	•	•	•
57	.0430"	1/2"	1-3/8"	•	•	•
58	.0420"	1/2"	1-3/8"	•	•	•
59	.0410"	1/2"	1-3/8"	•	•	•
60	.0400"	1/2"	1-3/8"	•	•	•

Fractional Part Number (Prefix)				02-R40C	02-R40C_C	02-R40C_T
Size (Suffix)	Decimal Equiv.	Flute Length	Overall Length	H.S.S. (135° SP)	Cobalt (135° SP)	TiN Coated (135° SP)
1/16	.0625"	5/8"	1-5/8"	•	•	•
5/64	.0781"	11/16"	1-11/16"	•	•	•
3/32	.0938"	3/4"	1-3/4"	•	•	•
7/64	.1094"	13/16"	1-13/16"	•	•	•
1/8	.1250"	7/8"	1-7/8"	•	•	•
9/64	.1406"	15/16"	2-15/16"	•	•	•
5/32	.1562"	1"	2-1/16"	•	•	•
11/64	.1719"	1-1/16"	2-1/8"	•	•	•
3/16	.1875"	1-1/8"	2-3/16"	•	•	•
13/64	.2031"	1-3/16"	2-1/4"	•	•	•
7/32	.2188"	1-1/4"	2-3/8"	•	•	•
15/64	.2344"	1-5/16"	2-7/16"	•	•	•
1/4	.2500"	1-3/8"	2-1/2"	•	•	•
17/64	.2656"	1-7/16"	2-5/8"	•	•	•
9/32	.2812"	1-1/2"	2-11/16"	•	•	•
19/64	.2969"	1-9/16"	2-3/4"	•	•	•
5/16	.3125"	1-5/8"	2-13/16"	•	•	•
21/64	.3281"	1-11/16"	2-15/16"	•	•	•
11/32	.3438"	1-11/16"	3"	•	•	•
23/64	.3594"	1-3/4"	3-1/16"	•	•	•
3/8	.3750"	1-13/16"	3-1/8"	•	•	•
25/64	.3906"	1-7/8"	3-1/4"	•	•	•
13/32	.4062"	1-15/16"	3-5/16"	•	•	•
27/64	.4219"	2"	3-3/8"	•	•	•
7/16	.4375"	2-1/16"	3-7/16"	•	•	•
29/64	.4531"	2-1/8"	3-9/16"	•	•	•
15/32	.4688"	2-1/8"	3-5/8"	•	•	•
31/64	.4844"	2-3/16"	3-11/16"	•	•	•
1/2	.5000"	2-1/4"	3-3/4"	•	•	•

Boelube Lubricator Bottle

Very Handy



Fits Easily In Pocket Or Toolbox

Insert any drill, tap or reamer (non-rotating) into the 1/4" opening at the top of the bottle for quick & easy lubrication.

Part Number	Type
70104-HHL	Red Liquid



For Specialty Composite Drill Bits See Page 89

AIR DRILLS & ACCESSORIES

Jobber's Length Drill & Chucking Reamer Sets



02-C1-H



02-127S14

Jobber's Length Drill Sets

- High performance, made in the USA.

Sturdy Metal Case Included

Drill Sets - Heavy Duty, 118° Non-Split Point

Part No.	Construction	Included Sizes	Bits
02-C13-H	High Speed Steel	1/16" to 1/4" (x 64ths)	13
02-C21-H	High Speed Steel	1/16" to 3/8" (x 64ths)	21
02-C15-H	High Speed Steel	1/16" to 1/2" (x 32nds)	15
02-C29-H	High Speed Steel	1/16" to 1/2" (x 64ths)	29
02-C1-H	High Speed Steel	#1 to #60	60
02-CAZ-H	High Speed Steel	A to Z	26
02-C115-H	High Speed Steel	1/16"-1/2", A-Z, #1-#60	115
02-C112-H*	High Speed Steel	1 to 6 mm (x 0.5 mm)	11
02-C252-H*	High Speed Steel	1 to 13 mm (x 0.5 mm)	25

Drill Sets - Heavy Duty, 118° Split Point

Part No.	Construction	Included Sizes	Bits
02-CB115-H	Cobalt	1/16"-1/2", A-Z, #1-#60	115
02-CT15-H*	H.S.S. TiN Coated	1/16" to 1/2" (x 32nds)	15

Drill Sets - Heavy Duty, 135° Split Point

Part No.	Construction	Included Sizes	Bits
02-CB13-H	Cobalt	1/16" to 1/4" (x 64ths)	13
02-CB21-H	Cobalt	1/16" to 3/8" (x 64ths)	21
02-CB15-H	Cobalt	1/16" to 1/2" (x 32nds)	15
02-CB29-H	Cobalt	1/16" to 1/2" (x 64ths)	29
02-CT29-H	H.S.S. TiN Coated	1/16" to 1/2" (x 64ths)	29
02-CB60-H	Cobalt	#1 to #60	60
02-CT60-H	H.S.S. TiN Coated	#1 to #60	60
02-CB26-H	Cobalt	A to Z	26

* Production grade.

Chucking Reamer Sets

- Reamers are straight shank, straight flute, right hand cut.

Chucking Reamer Sets

Part No. H.S.S.	Part No. Cobalt	Included Sizes	Bits
02-127S02	02-CB127S02	1/16" to 1/2" (x 64ths)	29
02-127S11	02-CB127S11	#1 to #60	60
02-127S14	02-CB127S14	A to Z	26

Left Hand Spiral Drills



- Premium hi-molybdenum tool steel construction is gold surface treated for maximum lubricity.
- Precision ground for superb accuracy and performance.
- Ideal for removing broken studs and fasteners without extractor.

Left Hand Spiral Drill Packs* - 135° Split Point

Part Number	Diameter	Flute Length	Overall Length
02-89290	3/32"	1-1/4"	2-1/4" (57 mm)
02-92440	1/8"	1-5/8"	2-3/4" (70 mm)
02-23170	5/32"	2"	3-1/8" (79 mm)
02-92450	3/16"	2-5/16"	3-1/2" (89 mm)
02-92444	7/32"	2-1/2"	3-3/4" (95 mm)
02-92460	1/4"	2-3/4"	4" (102 mm)
02-92453	9/32"	2-15/16"	4-1/4" (108 mm)
02-92470	5/16"	3-3/16"	4-1/2" (114 mm)
02-92480	3/8"	3-5/8"	5" (127 mm)

* Drills are six per pack except for 02-92470 & 02-92480 (three per pack).

Chipfree Acrylic Drills



Chipfree point is precision ground at 60° for gradual entry that avoids cracking. 0° rake eliminates grabbing and breakout.

Acrylic Drill Packs* - 60° Point

Part Number	Diameter	Flute Length	Overall Length
02-32260	3/32"	1-5/16"	2-1/4" (57 mm)
02-31500	1/8"	1-3/8"	2-1/2" (64 mm)
02-31510	5/32"	2-3/16"	2-7/8" (73 mm)
02-31520	3/16"	2"	3-3/16" (81 mm)
02-32220	7/32"	2-9/16"	3-3/4" (95 mm)
02-31530	1/4"	2-5/16"	3-9/16" (91 mm)

* Drills are twelve per pack. other sizes available, please inquire.

H.S.S. Adjustable Hand Reamers



- Easily adjustable by loosening one nut and tightening the other to ream any odd sized holes - perfect for field repairs.
- Made of long lasting high speed steel with a right hand cut.

Part No.	Range Of Adjustment	Blade L.	Overall Length
02-8A	1/4" - 9/32" (6.3 - 7.1 mm)	1-11/32"	3-1/4" (82.6 mm)
02-7A	9/32" - 5/16" (7.1 - 7.9 mm)	1-11/32"	3-1/2" (88.9 mm)
02-6A	5/16" - 11/32" (7.9 - 8.7 mm)	1-1/2"	4-1/8" (104.8 mm)
02-5A	11/32" - 3/8" (8.7 - 9.5 mm)	1-1/2"	4-3/8" (111.1 mm)
02-4A	3/8" - 13/32" (9.5 - 10.3 mm)	1-1/2"	4-3/4" (120.7 mm)
02-3A	13/32" - 7/16" (10.3 - 11.1 mm)	1-1/2"	5" (127 mm)
02-2A	7/16" - 15/32" (11.1 - 11.9 mm)	1-5/8"	5-1/4" (133.4 mm)

Note: 02-8A to 02-4A are 4-flute, 02-3A & 02-2A are 6-flute.

5PC Adjustable Hand Reamer Set (includes fitted case)

Part No.	Included Reamers	Range Of Adjustment
RS-AHR-4	02-8A, 02-7A, 02-6A & 02-5A	1/4" - 3/8" (6.3 - 9.5 mm)

Chucking Reamers

High Quality Construction

- Sizing chart used for reference only, available sizes may vary, please inquire.
- Many other styles & sizes available, please inquire.



High Speed Steel			
Type	Straight Flute	Left Spiral Flute	Right Spiral Flute
Shank	Straight	Straight	Straight
Part No. (Prefix)	700	720	740

Cobalt	
Type	Straight Flute
Shank	Straight
Part No. (Prefix)	700C

Carbide Tipped				
Type	Straight Flute	Straight Flute	Expansion Flute	Expansion Flute
Shank	Straight	Taper	Straight	Taper
Part No. (Prefix)	400	402	465	467

Solid Carbide	
Type	Straight Flute
Shank	Straight
Part No. (Prefix)	1564

Size (Suffix)	Decimal Equiv.
41	.0960"
40	.0980"
2.5mm	.0984"
39	.0995"
38	.1015"
37	.1040"
36	.1065"
7/64	.1094"
35	.1100"
34	.1110"
33	.1130"
32	.1160"
3mm	.1181"
31	.1200"
1230	.1230"
1240	.1240"
1247	.1247"
1/8	.1250"
1260	.1260"
30	.1285"
29	.1360"
3.5mm	.1378"
28	.1405"
9/64	.1406"
27	.1440"
26	.1470"
25	.1495"
24	.1520"
23	.1540"
5/32	.1562"
22	.1570"
4mm	.1575"

Size (Suffix)	Decimal Equiv.
21	.1590"
20	.1610"
19	.1660"
18	.1695"
11/64	.1719"
17	.1730"
16	.1770"
4.5mm	.1772"
15	.1800"
14	.1820"
13	.1850"
1855	.1855"
1865	.1865"
1870	.1870"
3/16	.1875"
1885	.1885"
12	.1890"
11	.1910"
10	.1935"
9	.1960"
5mm	.1968"
8	.1990"
7	.2010"
13/64	.2031"
6	.2040"
5	.2055"
4	.2090"
3	.2130"
5.5mm	.2165"
7/32	.2187"
2	.2210"
1	.2280"

Size (Suffix)	Decimal Equiv.
A	.2340"
15/64	.2344"
6mm	.2362"
B	.2380"
C	.2420"
D	.2460"
2480	.2480"
2490	.2490"
2495	.2495"
1/4	.2500"
2510	.2510"
6.5mm	.2559"
F	.2570"
G	.2610"
17/64	.2656"
H	.2660"
I	.2720"
7mm	.2756"
J	.2770"
K	.2810"
9/32	.2812"
L	.2900"
M	.2950"
7.5mm	.2953"
19/64	.2969"
N	.3020"
3105	.3105"
3115	.3115"
3120	.3120"
5/16	.3125"
3135	.3135"
8mm	.3150"

Size (Suffix)	Decimal Equiv.
O	.3160"
P	.3230"
21/64	.3281"
Q	.3320"
8.5mm	.3346"
R	.3390"
11/32	.3437"
S	.3480"
9mm	.3543"
T	.3580"
23/64	.3594"
U	.3680"
3730	.3730"
3740	.3740"
9.5mm	.3740"
3745	.3745"
3/8	.3750"
3760	.3760"
V	.3770"
W	.3860"
25/64	.3906"
10mm	.3937"
X	.3970"
Y	.4040"
13/32	.4062"
Z	.4130"
10.5mm	.4134"
27/64	.4219"
11mm	.4331"
4355	.4355"
4365	.4365"
4370	.4370"

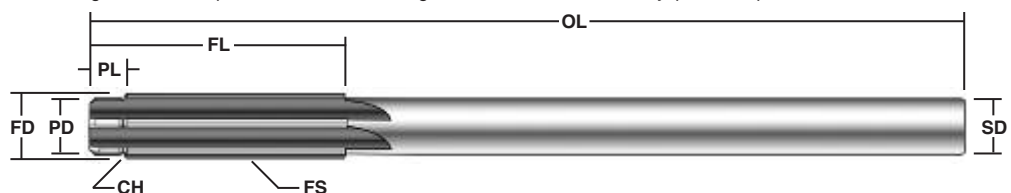
Size (Suffix)	Decimal Equiv.
7/16	.4375"
4385	.4385"
11.5mm	.4528"
29/64	.4531"
15/32	.4687"
12mm	.4724"
31/64	.4844"
12.5mm	.4921"
4980	.4980"
4990	.4990"
4995	.4995"
1/2	.5000"
5010	.5010"
13mm	.5118"
17/32	.5312"
13.5mm	.5315"
14mm	.5512"
9/16	.5625"
14.5mm	.5709"
15mm	.5906"
19/32	.5937"
15.5mm	.6102"
5/8	.6250"
16mm	.6299"
16.5mm	.6496"
21/32	.6562"
17mm	.6693"
11/16	.6875"
17.5mm	.6890"
18mm	.7087"
23/32	.7187"
18.5mm	.7283"

Size (Suffix)	Decimal Equiv.
19mm	.7480"
3/4	.7500"
19.5mm	.7677"
25/32	.7812"
20mm	.7874"
20.5mm	.8071"
13/16	.8125"
21mm	.8268"
27/32	.8437"
21.5mm	.8465"
22mm	.8661"
7/8	.8750"
22.5mm	.8858"
23mm	.9055"
29/32	.9062"
23.5mm	.9252"
15/16	.9375"
24mm	.9449"
24.5mm	.9646"
31/32	.9687"
25mm	.9843"
1	1.0000"
1-1/16	1.0625"
1-1/8	1.1250"
1-3/16	1.1875"
1-1/4	1.2500"
1-5/16	1.3125"
1-3/8	1.3750"
1-7/16	1.4375"
1-1/2	1.5000"

Key	
OL	Overall Length
FL	Flute Length
FD	Flute Diameter
FS	Flute Spiral
PL	Pilot Length
PD	Pilot Diameter
CH	Chamfer
SD	Shank Diameter

Basic Ordering Instructions:

Select desired reamer type from the charts at the top of the page (prefix) & add the desired reamer size from the sizing charts above (suffix). **Example:** To order a 1/4" straight flute, straight shank H.S.S. reamer, use part number **700-1/4**. Reamers ordered this way will be pilotless with geometry conforming to NAS 897 specifications. Overall length & shank diameter will vary, please inquire.



Custom Ordering Instructions:

Use the illustration above as a starting point - specifying only the options absolutely necessary will allow the most economical prices & the quickest turnaround. Cutting or non-cutting pilots, shanks with flats & many other options also available, please inquire.

USATCO Angle Drills

Affordable Close-Quarter Drilling Tools



13-1227A-1



13-1227A-2



13-1227A-3

- Steel alloy cylinder & rotor for long tool life.
- Precision machined for smooth & quiet operation.
- Milled motor housing - rear exhaust.

90° Angle - 1/4" Capacity, 1/4"-28 Thread - 0.3 hp (0.22 kW)			
Part Number	Free RPM	Overall Length	Weight
13-1227A-1	3000	8-1/4" (210 mm)	1.25 lbs (0.6 kgs)

45° Angle - 1/4" Capacity, 1/4"-28 Thread - 0.3 hp (0.22 kW)			
Part Number	Free RPM	Overall Length	Weight
13-1227A-2	3000	9" (229 mm)	1.25 lbs (0.6 kgs)

360° Angle - 1/4" Capacity, 1/4"-28 Thread - 0.3 hp (0.22 kW)			
Part Number	Free RPM	Overall Length	Weight
13-1227A-3	3000	8-3/4" (222 mm)	1.25 lbs (0.6 kgs)

Note: All models air inlet 1/4" NPT.



13-1227A-1EXT

13-1227A-2EXT

Made In The USA

Extension Angle Drills

- Features an extra-long drill head perfect for inaccessible areas.

90° Extension - 1/4" Cap., 1/4"-28 Thread - 0.3 hp (0.22 kW)			
Part Number	Free RPM	Overall Length	Weight
13-1227A-1EXT	3000	13-3/8" (340 mm)	2.0 lbs (0.9 kgs)

45° Extension - 1/4" Cap., 1/4"-28 Thread - 0.3 hp (0.22 kW)			
Part Number	Free RPM	Overall Length	Weight
13-1227A-2EXT	3000	14-7/8" (378 mm)	2.0 lbs (0.9 kgs)

Note: Extension drills also available with 9/32"-40 thread, please inquire.

Desoutter® Compact Angle Drills



DR300-T3000-S5-90



DR300-T3000-S5-30



DR300-T3000-S5-360

*High Precision, Durable
Drills For Long Life*

- Durable five blade motor with long life bearings.
- Lightweight and ergonomic composite grip.
- Fixed air inlet prevents foreign object damage.

Note: Compact lever start & 9/32"-40 thread avail., please inquire.

90° Angle - 3/16" Capacity, Collet Spindle - 0.4 hp (0.3 kW)			
Part Number	Free RPM	Overall Length	Weight
DR300-T3000-T5-90	3000	10-3/4" (273 mm)	1.4 lbs (0.6 kgs)

90° Angle - 3/16" Capacity, 1/4"-28 Thread - 0.4 hp (0.3 kW)			
Part Number	Free RPM	Overall Length	Weight
DR300-T3000-S5-90	3000	10-3/4" (273 mm)	1.4 lbs (0.6 kgs)

30° Angle - 3/16" Capacity, Collet Spindle - 0.4 hp (0.3 kW)			
Part Number	Free RPM	Overall Length	Weight
DR300-T3000-T5-30	3000	11-1/4" (286 mm)	1.4 lbs (0.6 kgs)

30° Angle - 3/16" Capacity, 1/4"-28 Thread - 0.4 hp (0.3 kW)			
Part Number	Free RPM	Overall Length	Weight
DR300-T3000-S5-30	3000	11-1/8" (283 mm)	1.4 lbs (0.6 kgs)

360° Angle - 3/16" Capacity, Collet Spindle - 0.4 hp (0.3 kW)			
Part Number	Free RPM	Overall Length	Weight
DR300-T3000-T5-360	3000	11-1/8" (283 mm)	1.5 lbs (0.7 kgs)

360° Angle - 3/16" Capacity, 1/4"-28 Thread - 0.4 hp (0.3 kW)			
Part Number	Free RPM	Overall Length	Weight
DR300-T3000-S5-360	3000	11-1/4" (286 mm)	1.5 lbs (0.7 kgs)

Dotco® Angle Drills

Comfortable Textured Grip



15LF283-62

- Vibration & noise reducing ergonomic design.
- Thermal insulated handle.

Composite Housing, 1/4" Cap., 1/4"-28 Thread - 0.4 hp (0.30 kW)			
Part Number* Rear Exhaust	Free RPM	Overall Length	Weight
15LF281-62	5300	10.7" (272 mm)	1.6 lbs (0.73 kgs)
15LF282-62	4000	10.7" (272 mm)	1.6 lbs (0.73 kgs)
15LF283-62	3300	10.7" (272 mm)	1.6 lbs (0.73 kgs)
15LF284-62	2400	11.1" (282 mm)	1.8 lbs (0.82 kgs)
15LF285-62	1000	11.8" (300 mm)	1.9 lbs (0.86 kgs)
15LF286-62	750	11.8" (300 mm)	1.9 lbs (0.86 kgs)
15LF287-62	600	11.8" (300 mm)	1.9 lbs (0.86 kgs)

'600' Mini Angle Head	
Suffix	Spindle Thd.
-61	10-32
-62 (standard)	1/4"-28
-63	9/32"-40
-64	5/16"-24

360° Mini Angle Head	
Suffix	Spindle Thd.
-91	10-32
-92	1/4"-28
-93	9/32"-40
-94	5/16"-24

45° Mini Angle Head	
Suffix	Spindle Thd.
-41	10-32
-42	1/4"-28
-43	9/32"-40
-44	5/16"-24

'700' Compact Angle Head	
Suffix	Spindle Thd.
-71	10-32
-72	1/4"-28
-73	9/32"-40
-74	5/16"-24

* Standard equipment is the 600 Series Mini Angle Head with 1/4"-28 internal thread (-62). To order other head types/sizes please select from the charts above the correct suffix required. **Example:** For a 360° Mini Angle Head with a 10-32 internal thread at 5300 RPM, the part number would be **15LF281-91** instead of 15LF281-62 (standard).

Sioux® 360° Angle Drill



*Lockable Angle Head
Provides Full 360° Rotation*

- Lever start, rear exhaust.
- Accepts straight shank bits up to 1/4".

1/4" Capacity - 0.75 hp (0.56 kW)			
Part Number	Free RPM	Overall Length	Weight
SDR10S40N360	4000	12-1/2" (318 mm)	2.7 lbs (1.3 kgs)

Dotco® Heavy-Duty Angle Drills

Comfortable Textured Grip



15LN288-52

- Great tool for tough jobs not suitable for lighter models.
- Extra powerful motor & sturdy angle head.
- Vibration & noise reducing ergonomic design.
- Thermal insulated handle.

Composite Housing, 1/4" Cap., 1/4"-28 Thread - 0.4 hp (0.30 kW)			
Part Number* Rear Exhaust	Free RPM	Overall Length	Weight
15LN288-52	3900	11.5" (292 mm)	2.6 lbs (1.18 kgs)
15LN281-52	3500	11.5" (292 mm)	2.6 lbs (1.18 kgs)
15LN283-52	1300	11.5" (292 mm)	2.6 lbs (1.18 kgs)
15LN284-52	1070	12.8" (325 mm)	3.0 lbs (1.36 kgs)
15LN285-52	870	12.8" (325 mm)	3.0 lbs (1.36 kgs)
15LN286-52	540	12.8" (325 mm)	3.0 lbs (1.36 kgs)

'500' Heavy-Duty Angle Head	
Suffix	Spindle Thd.
-51	10-32
-52 (standard)	1/4"-28
-53	9/32"-40
-54	5/16"-24

'500' Heavy-Duty Angle Head	
Suffix	Spindle Thd.
-55	3/8"-24
-59	3-Jaw Chuck
-59NC	3/8"-24 Male

* Standard equipment is the 500 Series Heavy-Duty Angle Head with 1/4"-28 internal thread (-52). To order other head types/sizes please select from the charts above the correct suffix required. **Example:** For a Heavy-Duty Angle Head with a 10-32 internal thread at 3900 RPM, the part number would be **15LN288-51** instead of 15LN288-52 (standard).

Sioux® Heavy-Duty Angle Drills



3A1240

NEW

Strongest Gears In Its Class

- Rugged construction & dependable service.
- Includes keyed chuck.
- Non-reversible (reversible available, please inquire).

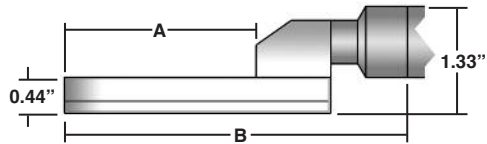
1/4" Cap. Chuck, 3/8"-24 Thread - 1.0 hp (0.75 kW) - Rear Exhaust			
Part Number	Free RPM	Overall Length	Weight
SDR10A22N2	2200	10.2" (260 mm)	2.9 lbs (1.3 kgs)

1/2" Cap. Chuck, 1/2"-20 Thread - 1.0 hp (0.75 kW) - Side Exhaust			
Part Number	Free RPM	Overall Length	Weight
3A1240	600	15-1/8" (384 mm)	6.5 lbs (2.9 kgs)

AIR DRILLS & ACCESSORIES

USATCO Offset 'Pancake' Angle Air Drills

Smooth, Quiet Operation

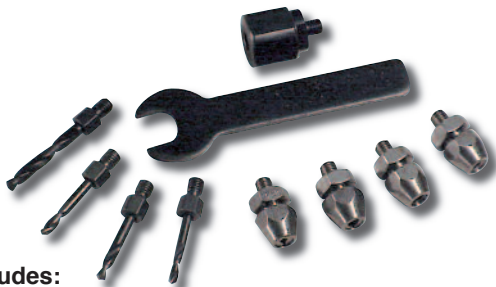


Steel alloy cylinder & rotor, precision milled motor housing.

90° Angle - 1/4" Capacity, 1/4"-28 Thread - 0.3 hp (0.22 kW)

Part Number	Free RPM	Clearance (A)	Offset Length (B)	Overall Length	Weight
13-1627	3000	2.44"	4.81"	11" (279 mm)	2.0 lbs (0.91 kgs)
13-1629	3000	3.79"	6.16"	12.35" (314 mm)	2.1 lbs (0.95 kgs)
13-1631	3000	5.13"	7.50"	13.69" (348 mm)	2.3 lbs (1.04 kgs)

Angle Drill Upgrade Kit



Kit Includes:

Four Adapter Drills (#10, #21, #30 & #40), Four Collet Chucks (#10, #21, #30 & #40), Cone Jaw Chuck & Wrench

Part Number	Description
53-99757	Complete 10 PC Kit

Cone-Jaw Chuck With Wrench

- Light-duty tool fits most angle drills with female thread.
- Use standard drills with any threaded spindle tool.



Part Number	Capacity	Thread
53-M3	1/16" to 1/4"	1/4"-28

Economy Angle Drills

Affordable Close Quarter Drilling Tools



90° Angle - 1/4" Capacity, 1/4"-28 Thread - 0.3 hp (0.22 kW)

Part Number	Free RPM	Overall Length	Weight
13-9950	2800	10-1/2" (267 mm)	1.6 lbs (0.7 kgs)

45° Angle - 1/4" Capacity, 1/4"-28 Thread - 0.3 hp (0.22 kW)

Part Number	Free RPM	Overall Length	Weight
13-9951	2800	11" (279 mm)	1.6 lbs (0.7 kgs)

Extended Reach Economy Angle Drill

Extra Length For Tight Areas



90° Extended - 1/4" Capacity, 1/4"-28 Thread - 0.3 hp (0.22 kW)

Part Number	Free RPM	Overall Length	Weight
13-9952	2800	13-1/4" (337 mm)	1.8 lbs (0.8 kgs)

USATCO Collet Chucks

1/4"-28 Thread



Integral units hold one size only, sub adapter not required.

Part Number	Size	Part Number	Size
20-4010	#10	20-4013	3/32"
20-4011	#11	20-4014	1/8"
20-4020	#20	20-4015	5/32"
20-4021	#21	20-4016	3/16"
20-4027	#27	20-4017	7/32"
20-4030	#30	20-4018	1/4"
20-4040	#40	20-41516	5/16"
20-4257	F	20-41318	3/8"

4 PC Collet Chuck Kit

Part Number	Sizes Included
53-92964	#10, #21, #30 & #40

Collets

- For use on all 9/32"-40 internal thread drills.
- Suitable for Desoutter & Atlas Copco drills.



Wire Gauge Sizes		
Part No.	Size	Decimal
AD040	60	.0400"
AD041	59	.0410"
AD042	58	.0420"
AD043	57	.0430"
AD0465	56	.0465"
AD052	55	.0520"
AD055	54	.0550"
AD0595	53	.0595"
AD0635	52	.0635"
AD067	51	.0670"
AD070	50	.0700"
AD073	49	.0730"
AD076	48	.0760"
AD0785	47	.0785"
AD081	46	.0810"
AD082	45	.0820"
AD086	44	.0860"
AD089	43	.0890"
AD0935	42	.0935"
AD096	41	.0960"
AD098	40	.0980"
AD0995	39	.0995"
AD1015	38	.1015"
AD1040	37	.1040"
AD1065	36	.1065"
AD110	35	.1100"

Wire Gauge Sizes		
Part No.	Size	Decimal
AD111	34	.1110"
AD113	33	.1130"
AD116	32	.1160"
AD120	31	.1200"
AD1285	30	.1285"
AD136	29	.1360"
AD1405	28	.1405"
AD144	27	.1440"
AD147	26	.1470"
AD1495	25	.1495"
AD152	24	.1520"
AD154	23	.1540"
AD157	22	.1570"
AD159	21	.1590"
AD161	20	.1610"
AD166	19	.1660"
AD1695	18	.1695"
AD1730	17	.1730"
AD177	16	.1770"
AD180	15	.1800"
AD182	14	.1820"
AD185	13	.1850"
AD189	12	.1890"
AD191	11	.1910"
AD1935	10	.1935"
AD1960	9	.1960"

Metric Sizes		
Part No.	Size	Decimal
AD0315	0.8	.0315"
AD0354	0.9	.0354"
AD0394	1.0	.0394"
AD0433	1.1	.0433"
AD0472	1.2	.0472"
AD0512	1.3	.0512"
AD0551	1.4	.0551"
AD0591	1.5	.0591"
AD0630	1.6	.0630"
AD0669	1.7	.0669"
AD0709	1.8	.0709"
AD0748	1.9	.0748"
AD0787	2.0	.0787"
AD0827	2.1	.0827"
AD0866	2.2	.0866"
AD0906	2.3	.0906"
AD0945	2.4	.0945"
AD0984	2.5	.0984"
AD1024	2.6	.1024"
AD1063	2.7	.1063"
AD1102	2.8	.1102"
AD1142	2.9	.1142"
AD1181	3.0	.1181"
AD1220	3.1	.1220"
AD1260	3.2	.1260"
AD1299	3.3	.1299"
AD1339	3.4	.1339"
AD1378	3.5	.1378"
AD1417	3.6	.1417"

Metric Sizes		
Part No.	Size	Decimal
AD1457	3.7	.1457"
AD1496	3.8	.1496"
AD1535	3.9	.1535"
AD1575	4.0	.1575"
AD1614	4.1	.1614"
AD1654	4.2	.1654"
AD1693	4.3	.1693"
AD1732	4.4	.1732"
AD1772	4.5	.1772"
AD1811	4.6	.1811"
AD1850	4.7	.1850"
AD1890	4.8	.1890"
AD1929	4.9	.1929"
AD1969	5.0	.1969"

Fractional Sizes		
Part No.	Size	Decimal
AD0312	1/32"	.0312"
AD0469	3/64"	.0469"
AD0625	1/16"	.0625"
AD0781	5/64"	.0781"
AD0937	3/32"	.0937"
AD1094	7/64"	.1094"
AD125	1/8"	.1250"
AD1406	9/64"	.1406"
AD1562	5/32"	.1562"
AD1719	11/64"	.1719"
AD1875	3/16"	.1875"

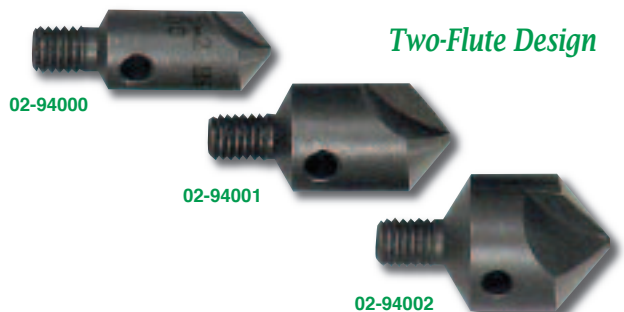
H.S.S. Threaded Shank Reamers



- 1/4"-28 shank thread.
- No pilot.

Part Number	Diameter	Decimal Equiv.	Overall Length
02-96503	#10	.1935"	5/8" (16 mm)
02-96502	#13	.1850"	5/8" (16 mm)
02-96501	#21	.1590"	5/8" (16 mm)
02-96499	#30	.1285"	5/8" (16 mm)
02-96505	1/4"	.2500"	5/8" (16 mm)
02-96567	#10	.1935"	1" (25.4 mm)
02-96566	#13	.1850"	1" (25.4 mm)
02-96565	#21	.1590"	1" (25.4 mm)
02-96564	#30	.1285"	1" (25.4 mm)
02-96568	1/4"	.2500"	1" (25.4 mm)

Threaded Shank 'Rosebud' C'sink Cutters



For angle drills, drill attachments & similar threaded shank tools.

1/4"-28 Shank Thread, 100° Cutting Angle	
Part Number	Diameter
02-94000	3/8"
02-94001	1/2"
02-94002	5/8"

Threaded Shank Adapter Drills

High Speed Steel Adapter Drills

Drills are manufactured to NAS 965 Type 'B' construction with 135° split points. Great for drilling general to medium duty, low tensile strength materials in confined areas.

Cobalt Adapter Drills

Drills are manufactured to NAS 965 Type 'D' construction with 135° heavy duty split points and surface treated. Made from M42 8% cobalt high speed steel. Great for drilling hard, tough high tensile strength materials in confined areas. When drilling low tensile strength materials these drills will have a significantly greater tool life than standard H.S.S., resulting in a much lower cost per drill.



10-32 Thread Drills On Next Page

Note: Carbide drills, PCD drills, & custom drill sizes also available, please inquire.

Adapter Drills, 1/4"-28 Shank Thread							
Drill Size	Decimal Equivalent	H.S.S. Stubby 3/4" OAL	H.S.S. Short 1-1/4" OAL	H.S.S. Long 2-1/8" OAL	Cobalt Stubby 3/4" OAL	Cobalt Short 1-1/4" OAL	Cobalt Long 2-1/8" OAL
2.3 mm	.0906"	02-2924-2.3	02-2964-2.3	02-2974-2.3	02-2924-2.3C	02-2964-2.3C	02-2974-2.3C
3/32"	.0938"	02-2921-3/32	02-2961-3/32	02-2971-3/32	02-2921-3/32C	02-2961-3/32C	02-2971-3/32C
40	.0980"	02-2922-40	02-2962-40	02-2972-40	02-2922-40C	02-2962-40C	02-2972-40C
3.17 mm	.1248"	02-2924-3.17	02-2964-3.17	02-2974-3.17	02-2924-3.17C	02-2964-3.17C	02-2974-3.17C
1/8"	.1250"	02-2921-1/8	02-2961-1/8	02-2971-1/8	02-2921-1/8C	02-2961-1/8C	02-2971-1/8C
30	.1285"	02-2922-30	02-2962-30	02-2972-30	02-2922-30C	02-2962-30C	02-2972-30C
27	.1440"	02-2922-27	02-2962-27	02-2972-27	02-2922-27C	02-2962-27C	02-2972-27C
3.96 mm	.1559"	02-2924-3.96	02-2964-3.96	02-2974-3.96	02-2924-3.96C	02-2964-3.96C	02-2974-3.96C
5/32"	.1562"	02-2921-5/32	02-2961-5/32	02-2971-5/32	02-2921-5/32C	02-2961-5/32C	02-2971-5/32C
21	.1590"	02-2922-21	02-2962-21	02-2972-21	02-2922-21C	02-2962-21C	02-2972-21C
20	.1610"	02-2922-20	02-2962-20	02-2972-20	02-2922-20C	02-2962-20C	02-2972-20C
16	.1770"	02-2922-16	02-2962-16	02-2972-16	02-2922-16C	02-2962-16C	02-2972-16C
4.76 mm	.1874"	02-2924-4.76	02-2964-4.76	02-2974-4.76	02-2924-4.76C	02-2964-4.76C	02-2974-4.76C
3/16"	.1875"	02-2921-3/16	02-2961-3/16	02-2971-3/16	02-2921-3/16C	02-2961-3/16C	02-2971-3/16C
11	.1910"	02-2922-11	02-2962-11	02-2972-11	02-2922-11C	02-2962-11C	02-2972-11C
10	.1935"	02-2922-10	02-2962-10	02-2972-10	02-2922-10C	02-2962-10C	02-2972-10C
3	.2130"	02-2922-3	02-2962-3	02-2972-3	02-2922-3C	02-2962-3C	02-2972-3C
7/32"	.2188"	02-2921-7/32	02-2961-7/32	02-2971-7/32	02-2921-7/32C	02-2961-7/32C	02-2971-7/32C
D	.2460"	02-2923-D	02-2963-D	02-2973-D	02-2923-DC	02-2963-DC	02-2973-DC
1/4"	.2500"	02-2921-1/4	02-2961-1/4	02-2971-1/4	02-2921-1/4C	02-2961-1/4C	02-2971-1/4C
6.35 mm	.2500"	02-2924-6.35	02-2964-6.35	02-2974-6.35	02-2924-6.35C	02-2964-6.35C	02-2974-6.35C
F	.2570"	02-2923-F	02-2963-F	02-2973-F	02-2923-FC	02-2963-FC	02-2973-FC
G	.2610"	02-2923-G	02-2963-G	02-2973-G	02-2923-GC	02-2963-GC	02-2973-GC
17/64"	.2656"	02-2921-17/64	02-2961-17/64	02-2971-17/64	02-2921-17/64C	02-2961-17/64C	02-2971-17/64C
J	.2770"	02-2923-J	02-2963-J	02-2973-J	02-2923-JC	02-2963-JC	02-2973-JC
9/32"	.2812"	02-2921-9/32	02-2961-9/32	02-2971-9/32	02-2921-9/32C	02-2961-9/32C	02-2971-9/32C
5/16"	.3125"	02-2921-5/16	02-2961-5/16	02-2971-5/16	02-2921-5/16C	02-2961-5/16C	02-2971-5/16C
8 mm	.3150"	02-2924-8	02-2964-8	02-2974-8	02-2924-8C	02-2964-8C	02-2974-8C
3/8"	.3750"	02-2921-3/8	02-2961-3/8	02-2971-3/8	02-2921-3/8C	02-2961-3/8C	02-2971-3/8C

Threaded Shank Adapter Drills (cont'd)

Adapter Drills, 10-32 Shank Thread							
Drill Size	Decimal Equivalent	H.S.S. Stubby 3/4" OAL	H.S.S. Short 1-1/4" OAL	H.S.S. Long 2-1/8" OAL	Cobalt Stubby 3/4" OAL	Cobalt Short 1-1/4" OAL	Cobalt Long 2-1/8" OAL
3/32"	.0938"	02-2621-3/32	02-2941-3/32	02-2951-3/32	02-2621-3/32C	02-2941-3/32C	02-2951-3/32C
40	.0980"	02-2622-40	02-2942-40	02-2952-40	02-2622-40C	02-2942-40C	02-2952-40C
1/8"	.1250"	02-2621-1/8	02-2941-1/8	02-2951-1/8	02-2621-1/8C	02-2941-1/8C	02-2951-1/8C
30	.1285"	02-2622-30	02-2942-30	02-2952-30	02-2622-30C	02-2942-30C	02-2952-30C
27	.1440"	02-2622-27	02-2942-27	02-2952-27	02-2622-27C	02-2942-27C	02-2952-27C
5/32"	.1562"	02-2621-5/32	02-2941-5/32	02-2951-5/32	02-2621-5/32C	02-2941-5/32C	02-2951-5/32C
21	.1590"	02-2622-21	02-2942-21	02-2952-21	02-2622-21C	02-2942-21C	02-2952-21C
20	.1610"	02-2622-20	02-2942-20	02-2952-20	02-2622-20C	02-2942-20C	02-2952-20C
16	.1770"	02-2622-16	02-2942-16	02-2952-16	02-2622-16C	02-2942-16C	02-2952-16C
3/16"	.1875"	02-2621-3/16	02-2941-3/16	02-2951-3/16	02-2621-3/16C	02-2941-3/16C	02-2951-3/16C
11	.1910"	02-2622-11	02-2942-11	02-2952-11	02-2622-11C	02-2942-11C	02-2952-11C
10	.1935"	02-2622-10	02-2942-10	02-2952-10	02-2622-10C	02-2942-10C	02-2952-10C
3	.2130"	02-2622-3	02-2942-3	02-2952-3	02-2622-3C	02-2942-3C	02-2952-3C
7/32"	.2188"	02-2621-7/32	02-2941-7/32	02-2951-7/32	02-2621-7/32C	02-2941-7/32C	02-2951-7/32C
1/4"	.2500"	02-2621-1/4	02-2941-1/4	02-2951-1/4	02-2621-1/4C	02-2941-1/4C	02-2951-1/4C
17/64"	.2656"	02-2621-17/64	02-2941-17/64	—	—	—	—
9/32"	.2812"	02-2621-9/32	02-2941-9/32	—	—	—	—
5/16"	.3125"	02-2621-5/16	02-2941-5/16	02-2951-5/16	02-2621-5/16C	—	—
3/8"	.3750"	—	—	02-2951-3/8	02-2621-3/8C	—	—

Threaded Shank Adapter Drill Sets

*1/4"-28
Threaded
Shank*

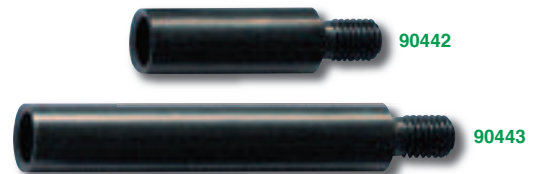


Stubby 4 PC Sets	
Part Number	Included Sizes (1 each)
53-2921	3/32", 1/8", 5/32" & 3/16"
53-2922	#10, #21, #30 & #40

Short 4 PC Sets	
Part Number	Included Sizes (1 each)
53-2961	3/32", 1/8", 5/32" & 3/16"
53-2962	#10, #21, #30 & #40

Long 4 PC Sets	
Part Number	Included Sizes (1 each)
53-2971	3/32", 1/8", 5/32" & 3/16"
53-2972	#10, #21, #30 & #40

Threaded Shank Countersink Extensions



- Versatile - for use with countersinks, drill bits etc.
- 1/4"-28 threaded shank & 1/4"-28 female thread.

Part Number	Body Length	Body Dia.	Shank Length
90442	1" (25.4 mm)	3/8"	5/16"
90443	2" (50.8 mm)		
90444	4" (101.6 mm)		

Threaded Shank Adapters



Part Number	Converts
20-90409	1/4"-28 Male Thread To 9/32"-40 Female Thread
20-90411	9/32"-40 Male Thread To 1/4"-28 Female Thread
20-90413	1/4"-28 Male Thread To 10-32 Female Thread

AIR DRILLS & ACCESSORIES

USATCO Rivet Removal Tools

Solid Aluminum Construction



53-410

Essential For Repair Work

Adjustable drill-out assembly limits penetration to rivet, not beyond.

Standard Rivet Removal Tool	
Part Number	Description
53-400	Tool, Guides & 4 Bits (#10, #21, #30 & #40)

Blind Rivet Removal Tool

- Serrated end cup prevents slippage while drilling rivets.
- For POP, Adel, Cherry blind rivets etc.
- Not for use with steel stemmed blind rivets.

Blind Rivet Removal Tool	
Part Number	Description
53-410	Tool, Guides & 4 Bits (3/32", 1/8", 5/32" & 3/16")

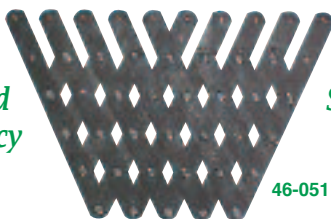
Replacement Bits	
Part Number	Description
02-2972-10	#10
02-2972-21	#21
02-2972-30	#30
02-2972-40	#40

Replacement Bits	
Part Number	Description
02-2971-3/32	3/32"
02-2971-1/8	1/8"
02-2971-5/32	5/32"
02-2971-3/16	3/16"

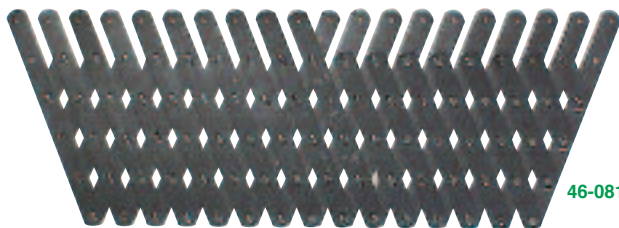
Rivet Fan Spacing Tools

Unequalled For Accuracy

Save Lots Of Time



46-051



46-081

- Used for layout & marking of equally spaced rivet holes.
- Hole spacing from 1/2" (13 mm) closed to 2" (51 mm) open.

Part Number	Type	Fingers	Open Length
46-081	Standard	20	38" (97 cm)
46-051	Mini	10	18" (46 cm)

Strap Duplicators

Tapered back end is convenient for prying apart sheets.



Punch Type

Punch Type (marks sheet from hidden pilot hole)		
Part Number 6-1/4" Reach ('L')	Part Number 13-1/4" Reach ('L')	Drill Size & Pilot Diameter
46-230-1	46-230-21	#40
46-230-2	46-230-22	#30
46-230-3	46-230-23	#21
46-230-4	46-230-24	#19
46-230-5	46-230-25	#10
46-230-6	46-230-26	#5
46-230-7	46-230-27	1/4"
46-230-8	46-230-28	F



Bushing Type

Bushing Type (with jig, drill duplicate holes from overlapping sheet)		
Part Number 6-1/4" Reach ('L')	Part Number 13-1/4" Reach ('L')	Drill Size & Pilot Diameter
46-231-1	46-231-21	#40
46-231-2	46-231-22	#30
46-231-3	46-231-23	#21
46-231-4	46-231-24	#19
46-231-5	46-231-25	#10
46-231-6	46-231-26	#5
46-231-7	46-231-27	1/4"
46-231-8	46-231-28	F



Bushing Inverted Pilot Type

Bushing Inverted Pilot Type (bushing type with inverted pilot)		
Part Number 6-1/4" Reach ('L')	Part Number 13-1/4" Reach ('L')	Drill Size & Pilot Diameter
46-232-1	46-232-21	#40
46-232-2	46-232-22	#30
46-232-3	46-232-23	#21
46-232-4	46-232-24	#19
46-232-5	46-232-25	#10
46-232-6	46-232-26	#5
46-232-7	46-232-27	1/4"
46-232-8	46-232-28	F

Strap Duplicator Sets



Part Number	Type	Includes (1 each):
53-70369	Bushing, 6-1/4" Reach	46-231-1, 2, 3 & 5
53-70370	Bushing, 13-1/4" Reach	46-231-21, 22, 23 & 25
53-70371	Inverted, 6-1/4" Reach	46-232-1, 2, 3 & 5
53-70372	Inverted, 13-1/4" Reach	46-232-21, 22, 23 & 25

Chip Chasers



Easily remove chips between sheets after drilling rivet holes.

Part Number	Blade Length
04-100	2-3/4"
04-200	5-7/8"

Drill Stand Kit

Fitted Case Helps Prevent F.O.D.



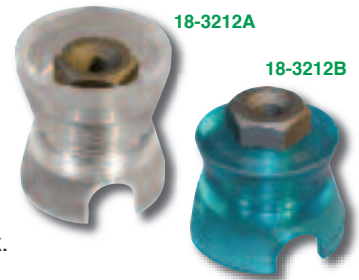
Kit Includes:

Three Housings, Nine Bushings (#40, #30, #21, #10, 5/32", 3/16", 7/32", 1/4" & F) & Fitted Plastic Case

Part Number	Description
53-590DBK	Complete 13 PC Kit

Drill Stands & Threaded Bushings

Interchangeable & Hardened Bushings



- Keeps your drills & taps perpendicular to work surface.
- No-mar transparent plastic allows a clear view of the work.

Drill Stands (order bushings below)			
Part Number	Type	Thread	Height*
18-3212A	Standard	1/2"-13	1-5/8"
18-3212B	Low-Profile	1/2"-13	1-1/8"
18-3215A	Large Diameter	3/4"-16	1-3/4"

1/2"-13 Thread Bushings		3/4"-16 Thread Bushings	
Part Number	Drill Size	Part Number	Drill Size
18-1213-40	#40	18-1215-9/32	9/32"
18-1213-3/32	3/32"	18-1215-5/16	5/16"
18-1213-30	#30	18-1215-11/32	11/32"
18-1213-1/8	1/8"	18-1215-3/8	3/8"
18-1213-21	#21	18-1215-7/16	7/16"
18-1213-5/32	5/32"	18-1215-1/2	1/2"
18-1213-10	#10		
18-1213-3/16	3/16"		
18-1213-7/32	7/32"		
18-1213-1/4	1/4"		

* Height of low-profile stand less bushing.

Drill Stand & Slip Bushings

Clear & Durable Lexan Stand



- New and improved design.
- Steel liner with bushing lock holds industry standard 1/2" OD slip bushings.
- Bushings are 3/4" long.

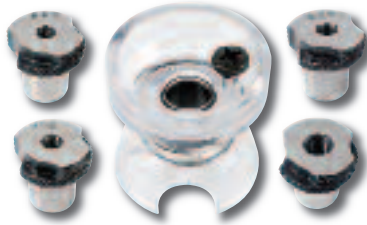
Drill Stand (order bushings below)	
Part Number	Height
18-5210	1-3/4"

1/2" OD Slip Bushings		1/2" OD Slip Bushings	
Part Number	Drill Size	Part Number	Drill Size
18-1040	#40	18-1045	5/32"
18-1041	3/32"	18-1046	#10
18-1042	#30	18-1047	3/16"
18-1043	1/8"	18-1048	7/32"
18-1044	#21	18-1049	1/4"

AIR DRILLS & ACCESSORIES

Drill Stand & Slip Bushing Sets

Clear &
Durable
Lexan
Stand



Made In
The USA



5 PC Number Set Includes: 53-16070

Drill Stand & Four Slip Bushings (#10, #21, #30 & #40)

5 PC Fractional Set Includes:

Drill Stand & Four Slip Bushings (3/32", 1/8", 5/32" & 3/16")

10 PC Set Includes:

Drill Stand & Five Slip Bushings (#10, #21, #30, #40, 3/32", 1/8", 5/32", 3/16" & 1/4")

Part Number	Description
53-16070	5 PC Number Set
53-16071	5 PC Fractional Set
53-16075	10 PC Piece Set

Drill Stand & Slip Bushing Kit



18 PC Kit Includes:

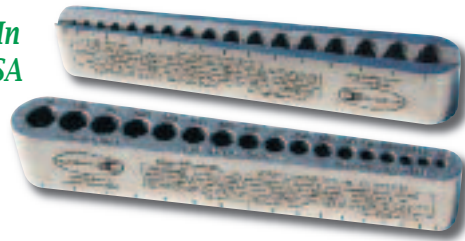
Custom Fitted Case

Drill Stand, 16 Slip Bushings (#8, #10, #13, #16, #20, #21, #27, #30, #40, 3/32", 1/8", 5/32", 3/16", 1/4", 5/16" & "D") & Case

Part Number	Description
53-16045	18 PC Set

Big Gator Drill Guide

Made In
The USA

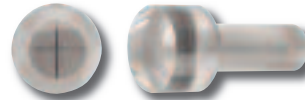


- Durable heat-treated, alloyed steel construction.
- 17 holes with marked centerlines for proper hole alignment.
- "V" groove on bottom for easy drilling on corners and rounds.

Part Number	Type	Range (increments)	Dimensions
18-70416	Fractional	1/8" to 3/8" (1/64")	5-1/2" L 7/8" W 7/8" H
18-70423	Metric	3 to 9.5mm (0.5mm)*	

* Metric guide also includes 3.3, 4.2 and 6.8mm holes.

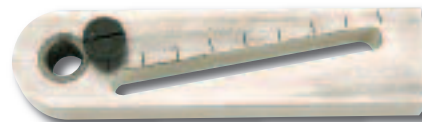
"Bombsite" Precision Optical Hole Locator



- Made of virtually unbreakable optical grade clear acrylic.
- Permanently etched crosshairs provide an extremely accurate and magnified reference point accurate to $\pm 0.001"$ of dead center.
- Works with all standard 1/2" diameter slip bushing tools.

Part Number	Diameter
70349	1/2" (12.7mm)

Drill Bar



- This adjustable, slip-type drill bar provides accurate placement and alignment of drilled holes. Includes lock screw and liner.
- Use it with the spotter (above) to center the drill bar within $\pm 0.001"$. Once centered replace the spotter with a slip bushing and drill.

Part Number	Dimensions
70346	6"L x 1-1/2"W x 3/4"H

Threaded Channel Drill Stands

- Keep drills a perfect 90° to the work surface.
- Use with 1/2"-13 threaded bushings offered on previous page.
- Three hole type allows more efficient work with multiple bushings ready to go.
- Bottom feet allow for quick chip ejection.



Part Number	Type
18-13186	One Hole
18-13187	Three Hole

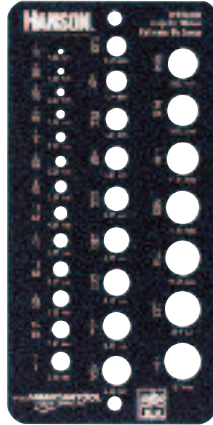
18-13186

Drill Gauges

Conforms To Gov't Spec GG-G86b

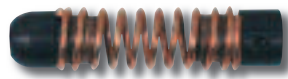
- Made of heavy gauge steel, machined & ground to close tolerances.
- Text of hole sizes & decimal equivalents permanently etched into face for long life.

Part No.	Drill Types & Sizes
18-12	Letter (A to Z)
18-13	Number (61 to 80) & (3" to 1-1/8")
18-14	Fractional (1/16" to 1/2" x 64ths)
18-14E	Same As Above, Easy Read Type
18-15	Number (1 to 60)
18-15E	Same As Above, Easy Read Type
18-35	Metric (to 13 mm x .05 mm)



18-14E

Drill Stops



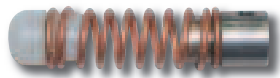
18-DS-20

- Prevents work damage from uncontrolled drill breakthru.
- Positive stop, spring cushioned contact.

Part No.	Drill Size	O.A.L.
18-DS-21	#21	1-1/2" (38 mm)
18-DS-20	#20	
18-DS-17	#17	
18-DS-16	#16	
18-DS-12	#12	
18-DS-11	#11	
18-DS-10	#10	
18-DS-6	#6	
18-DS-1	#1	2-1/8" (54 mm)
18-DS-1/4	1/4"	
18-DS-5/16	5/16"	
18-DS-7/32	7/32"	
18-DS-9/32	9/32"	
18-DS-3/8	3/8"	
18-DS-7/16	7/16"	

Part No.	Drill Size	O.A.L.
18-DS-50	#50	1-5/16" (33 mm)
18-DS-41	#41	
18-DS-40	#40	
18-DS-30	#30	
18-DS-28	#28	
18-DS-27	#27	

Drill Stop 4 PC Set	
Part Number	Included Sizes (1 each)
53-1234	#10, #21, #30, #40



18-DS-20NM

No-Mar Drill Stops

- Unique rounded plastic face eliminates surface marring.
- Color coded, locks on drill with two set screws.

Part Number	Color	Size	Part Number	Color	Size
18-DS-40NM	Zinc	#40	18-DS-20NM	Zinc	#20
18-DS-30NM	Copper	#30	18-DS-10NM	Brass	#10
18-DS-21NM	Black	#21	18-DS-1/4NM	Copper	1/4"

Hi-Shear Ultralite® Nutplate Air Drill



Fully Adjustable Feed Rate

Lightweight Design

Many Tooling Options Available, For Ordering & Pricing Info Please Inquire

- Only one hand required to locate, drill & countersink both holes.
- Easily convert rivet spacings with interchangeable foot attachments.
- Available in single wing, double wing & mickey mouse models.
- Accommodates all nutplate spindle spacings from 0.219" to 1.125".
- Available in both 600 & 7000 RPM models (please specify).

Specifications	
Drill Stroke Length	1/2"
Available Spindle Speeds	600 and 7000 RPM
Collet Stroke Length	1/4"
Horsepower	0.54
Feed Rate Change	0.001" - 0.012" Per Revolution
Weight	4.75 lbs (2.2 kgs)

H.S.S. Nut Plate Drill Bits



- 100° countersink, 8-32 thread.
- Cobalt nut plate drill bits also available, please inquire.

'L' Dim. = 0.295"		
Part Number	Countersink Dia.	Drill Diameter
40-100-25-8	.187"	.0980"
S40-100-25-8	.250"	.0980"
30-100-25-8	.250"	.1285"

'L' Dim. = 0.420"		
Part Number	Countersink Dia.	Drill Diameter
40-100-35-8	.187"	.0980"
S40-100-35-8	.250"	.0980"
30-100-35-8	.250"	.1285"

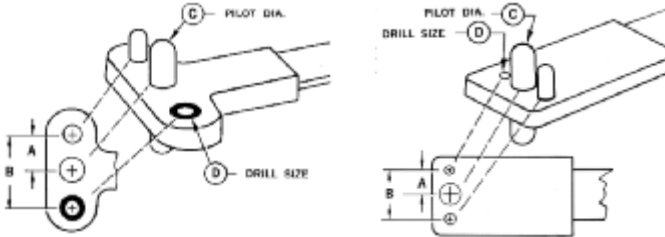
'L' Dim. = 0.560"		
Part Number	Countersink Dia.	Drill Diameter
40-100-50-8	.187"	.0980"
S40-100-50-8	.250"	.0980"
30-100-50-8	.250"	.1285"

Nut Plate Drill Jigs



04-518-ND

- Designed for accurate drilling of rivet holes for nut plates.
- Flexible handle provides hand clearance when jig is in use.

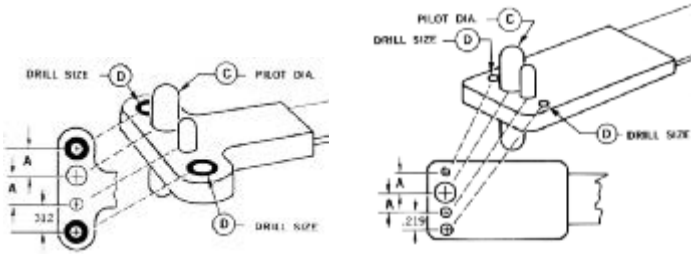


Two Lug Type Style 1

Two Lug Type Style 2

Two Lug Type Style 1					
Part No.	Bolt Ref.	'A' Dim.	'B' Dim.	Pilot Dia.	Drill Size
04-518-A	#6	.344"	.688"	.139"	#40
04-518-B	#8	.344"	.688"	.164"	#40
04-518-C	#10	.344"	.688"	.191"	#40
04-518-D	1/4"	.500"	1.000"	.248"	#40
04-518-E	5/16"	.500"	1.000"	.312"	#30
04-518-F	3/8"	.500"	1.000"	.372"	#30
04-518-M	—	.375"	.750"	.4375"	#40
04-518-N	—	.500"	1.000"	.6875"	#30
04-518-P	—	.6875"	1.375"	.811"	#30

Two Lug Type Style 2					
Part No.	Bolt Ref.	'A' Dim.	'B' Dim.	Pilot Dia.	Drill Size
04-518-NA	#4	.203"	.406"	.112"	#40
04-518-NB	#6	.218"	.436"	.139"	#40
04-518-NC	#8	.234"	.468"	.164"	#40
04-518-ND	#10	.250"	.500"	.191"	#40
04-518-NE	1/4"	.281"	.562"	.248"	#40
04-518-NF	5/16"	.3125"	.625"	.312"	#30



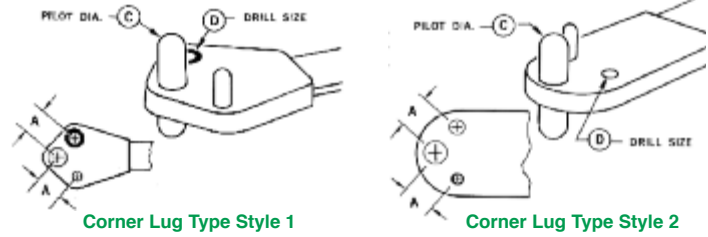
One Lug Type Style 1

One Lug Type Style 2

One Lug Type Style 1				
Part No.	Bolt Ref.	'A' Dim.	Pilot Dia.	Drill Size
04-518-G	#6	.344"	.139"	#40
04-518-H	#8	.344"	.164"	#40
04-518-J	#10	.344"	.191"	#40
04-518-K	1/4"	.344"	.248"	#40
04-518-L	#10 Sp.	.344"	.213"	#40

One Lug Type Style 2				
Part No.	Bolt Ref.	'A' Dim.	Pilot Dia.	Drill Size
04-518-PA	#4	.203"	.112"	#40
04-518-PB	#6	.218"	.139"	#40
04-518-PC	#8	.234"	.164"	#40
04-518-PD	#10	.250"	.191"	#40
04-518-PE	1/4"	.281"	.248"	#40

Nut Plate Drill Jigs (cont'd)

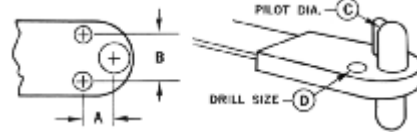


Corner Lug Type Style 1

Corner Lug Type Style 2

Corner Type Style 1				
Part No.	Bolt Ref.	'A' Dim.	Pilot Dia.	Drill Size
04-518-R	#6	.344"	.139"	#40
04-518-S	#8	.344"	.164"	#40
04-518-T	#10	.344"	.191"	#40
04-518-U	1/4"	.500"	.248"	#40
04-518-V	5/16"	.500"	.312"	#30

Corner Type Style 2				
Part No.	Bolt Ref.	'A' Dim.	Pilot Dia.	Drill Size
04-518-SA	#4	.203"	.112"	#40
04-518-SB	#6	.218"	.139"	#40
04-518-SC	#8	.234"	.164"	#40
04-518-SD	#10	.250"	.191"	#40
04-518-SE	1/4"	.281"	.248"	#40

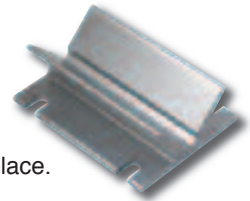


Mini Anchornut Type					
Part No.	Bolt Ref.	'A' Dim.	'B' Dim.	Pilot Dia.	Drill Size
04-518-TA	#10	.250"	.219"	.191"	#40
04-518-TB	1/4"	.281"	.219"	.248"	#40
04-518-TC	5/16"	.312"	.250"	.312"	#30

Tube Drilling Jig

No Clamping Necessary

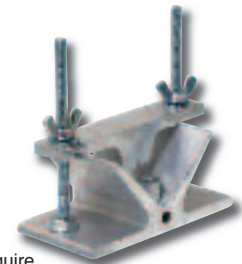
- For drilling tubes & other round stock.
- Bolts to drill press table.
- Grooved & angled sides hold work in place.



Part Number	Description
70189	Tube Drilling Jig

Drill Rite™ Precision Drill Guide

- Allows hand drills to perform like a professional drill press.
- High quality aircraft grade aluminum construction.
- 3/16" & 1/4" drill bushings included with tool.



Note: Other hardened drill bushings avail., please inquire.

Part Number	Capacity (pipe or round stock)
70400	1/2" to 2-1/2" Diameter